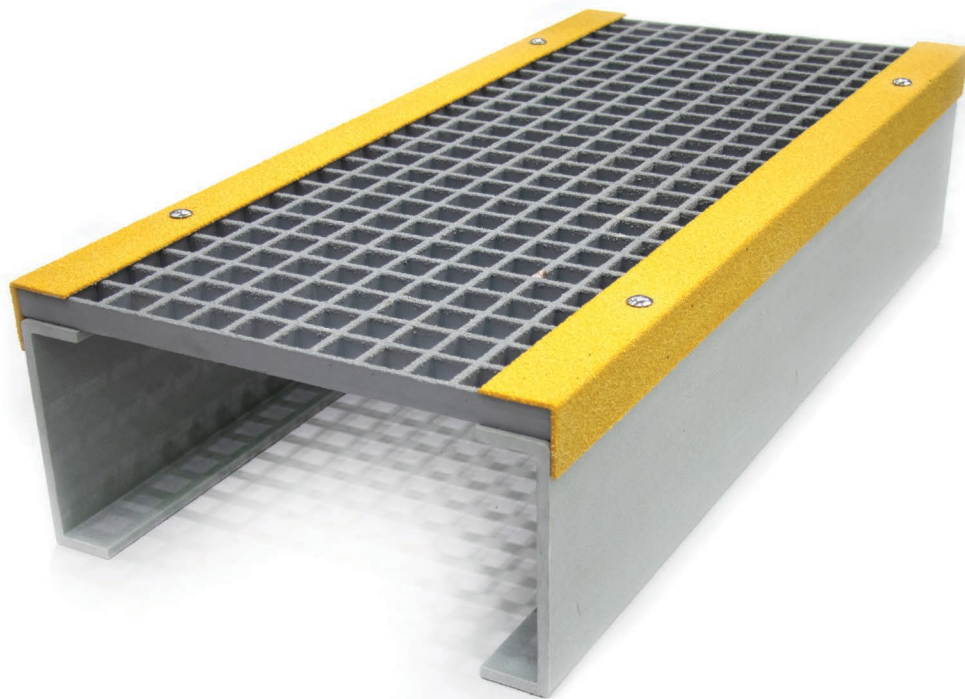


**COBA**



## Assembly & Installation Guidelines

COBAGrip Stepover GRP



**fire  
& safety  
centre**

**Available From:**

Fire and Safety Centre

15 Atkinsons Way, Foxhills Industrial Estate  
Scunthorpe, North Lincolnshire, DN15 8QJ

**Tel:** 01724 281044 **Web:** [www.fireandsafetycentre.co.uk](http://www.fireandsafetycentre.co.uk)

**Email:** [sales@fireandsafetycentre.co.uk](mailto:sales@fireandsafetycentre.co.uk)

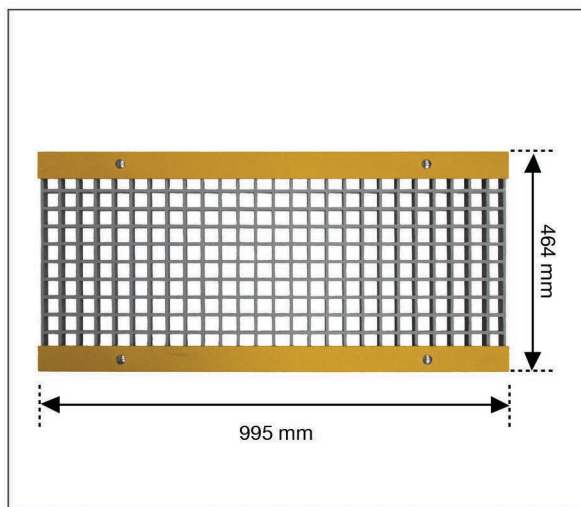
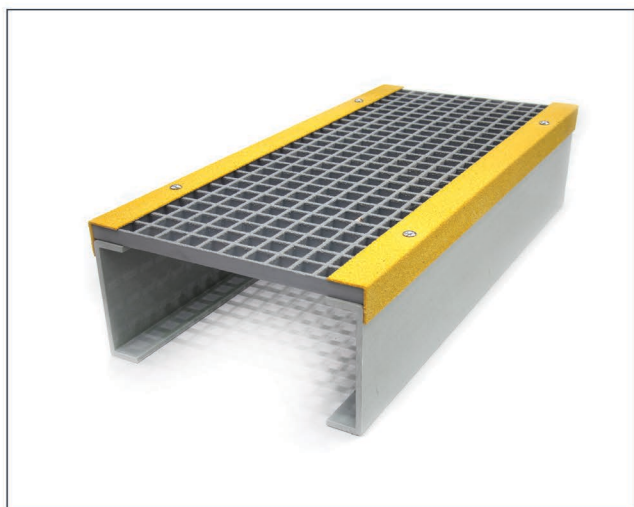
## COBAGrip Stepover GRP Components Kit

### Materials

- 1 x GRP Grating Board (464mm x 995 x 25mm)
- 2 x GRP Yellow Nosing's (1000mm x 55mm x 55mm)
- 2 x GRP "U" Profiles (dependent on height of step over)
- 4 x M Clip Kits: 4 Clips, 4 bolts, 4 nuts, 4 washers.

### Equipment

- 13 mm Spanner



### Preparation

Ensure all materials are present before starting the assembly. For best results it is advised to install on a level and clean floor. Simply follow these simple steps to achieve a durable, strong and safe step over for multiple applications




**fire  
& safety  
centre**

### Available From:

Fire and Safety Centre  
15 Atkinsons Way, Foxhills Industrial Estate  
Scunthorpe, North Lincolnshire, DN15 8QJ  
**Tel:** 01724 281044 **Web:** [www.fireandsafetycentre.co.uk](http://www.fireandsafetycentre.co.uk)  
**Email:** [sales@fireandsafetycentre.co.uk](mailto:sales@fireandsafetycentre.co.uk)

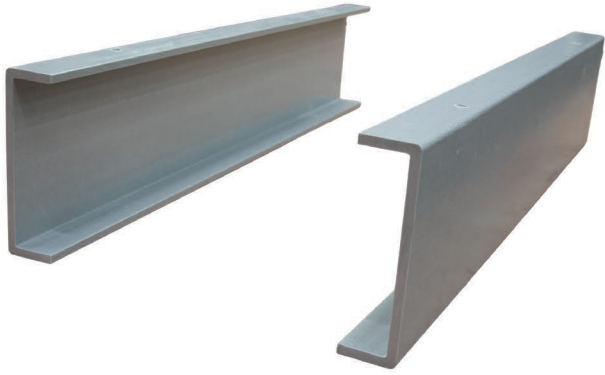
# Assembly Instructions

**1**



Place M Clips into the 5th square from each corner, running along the length of the grating, ensuring the overhanging clips are on top of the grating.

**2**



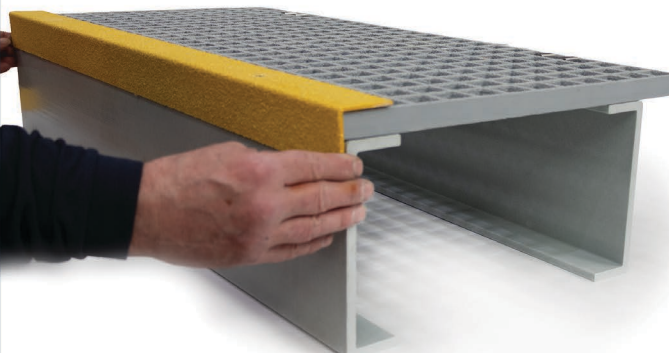
Place the 2 "U" profiles upright, facing each other

**3**




Line up grating on top of "U" profile

**4**



Add nosing's on top of grating and ensure all pre-drilled holes line up through the nosing, M Clip and into the top of the "U" profile.

**5**



Place bolt through hole and apply washer first and bolt afterwards on the underside of the "U" profile

**6**



Once all 4 fasteners are in place, use a 13mm spanner to tighten. Ensure Stepovert is sturdy before use.



**fire  
& safety  
centre**

**Available From:**

Fire and Safety Centre

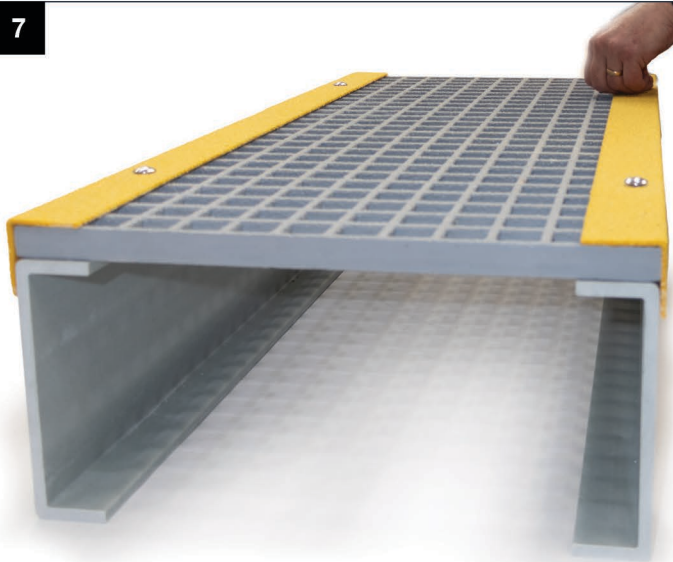
15 Atkinsons Way, Foxhills Industrial Estate

Scunthorpe, North Lincolnshire, DN15 8QJ

**Tel:** 01724 281044 **Web:** [www.fireandsafetycentre.co.uk](http://www.fireandsafetycentre.co.uk)

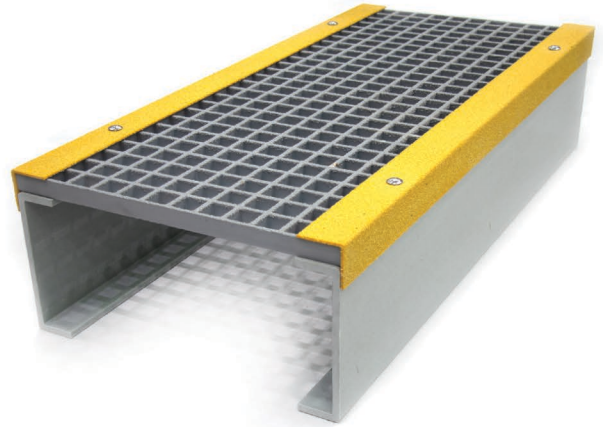
**Email:** [sales@fireandsafetycentre.co.uk](mailto:sales@fireandsafetycentre.co.uk)

7



Ensure all bolts are fastened tightly before use.

8



Stepovers are to be used as a safety measure. The design allows them to be laid loosely on level ground or they can also be bolted to the ground for a more permanent fixture.



**fire  
& safety  
centre**

**Available From:**

Fire and Safety Centre

15 Atkinsons Way, Foxhills Industrial Estate

Scunthorpe, North Lincolnshire, DN15 8QJ

**Tel:** 01724 281044 **Web:** [www.fireandsafetycentre.co.uk](http://www.fireandsafetycentre.co.uk)

**Email:** [sales@fireandsafetycentre.co.uk](mailto:sales@fireandsafetycentre.co.uk)