

FIRECHIEF® SMOKE ALARM 10 YR SEALED BATTERY WIRELESS INTERLINKED

FIRECHIEF®
making the world a safer place

PROTECT YOUR FAMILY WITH
FIRECHIEF® HOME ALARMS.

MODEL:
FSB10W



FSB10W
117-2000



- Equipped with optical smoke sensing technology
- Wireless interlink with up to 39 other Firechief® Home alarms
- Sealed in 10 year lithium battery
- 5 year warranty
- BSI Kitemarked to BS EN 14604:2005 + AC:2008
- Has dust compensation technology, designed to learn the environment and reduce the number of false alarms
- FSC certified packaging
- Compatible with Firechief® Home Alarm Locate remote



KM 803384
BS EN 14604



**Fire and Safety
Centre**

Available From:
Fire and Safety Centre
15 Atkinsons Way, Foxhills Industrial Estate
Scunthorpe, North Lincolnshire, DN15 8QJ
Tel: 01724 281044 **Web:** www.fireandsafetycentre.co.uk
Email: sales@fireandsafetycentre.co.uk

FIRECHIEF® SMOKE ALARM 10 YR SEALED BATTERY WIRELESS INTERLINKED



TRUST FIRECHIEF® HOME ALARMS TO KEEP YOUR FAMILY SAFE.

Secure your home with the Firechief® Smoke Alarm, an advanced solution for early fire detection. This smoke alarm can wirelessly interlink with up to 39 other Firechief® Home Alarms. It is easy to install and requires no complex wiring, making it quick and convenient to set up, while the long-lasting battery provides continuous, reliable protection.

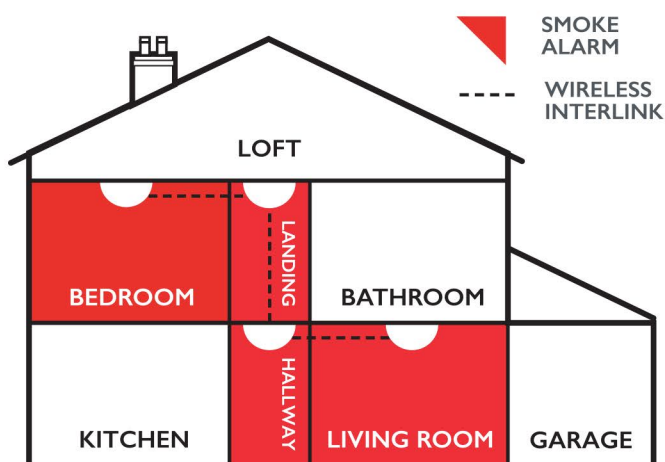
The FSB10W is designed with a loud audible alarm and LED indicators to immediately notify you of potential danger. Its sleek and compact design blends seamlessly with any home decor, combining aesthetic appeal with essential functionality. Depend on Firechief® Home Alarms to deliver peace of mind and robust protection for you and your family.

What do I need, and where?

Based on current best practice, and ongoing legislative reforms, the Firechief® Home Safety Team recommends that you should:

Install Firechief® Home wireless smoke alarms in the rooms most frequently used during the daytime, such as living rooms, dining rooms, and bedrooms.

Install Firechief® Home wireless smoke alarms in every circulation space on each storey such as hallways and landings.



MODEL: FSB10W



SPECIFICATION

Model	FSB10W
Product Code	117-2000
Description	Firechief® Smoke Alarm 10 Year Sealed Battery Wireless Interlinked
Power	built-in DC 3V(CR17450) Lithium battery (battery not replaceable)
Alarm Volume:	>85dB (A) at 3 metres
Alarm Sensitivity:	0.10-0.16dB/m
Hush/Silence Time:	approx. 8 minutes
Certified to:	EN14604:2005/AC: 2008
Sound Pattern:	ISO8201 (Beep 0.5s - pause 0.5s - Beep 0.5s - pause, 0.5s - Beep 0.5s - pause 1.5s, with the RED LED flash, repeat this alarm pattern)
Alarm sound pattern:	Beep - Beep - pause 0.5s, Beep - Beep - pause 0.5s, Beep - Beep - pause 1.5s, with the red LED flash, repeat this alarm pattern.
Dimensions (mm)	Φ 120*28mm



**Fire and Safety
Centre**

Available From:

Fire and Safety Centre
15 Atkinsons Way, Foxhills Industrial Estate
Scunthorpe, North Lincolnshire, DN15 8QJ
Tel: 01724 281044 **Web:** www.fireandsafetycentre.co.uk
Email: sales@fireandsafetycentre.co.uk