

# FIRECHIEF® CARBON MONOXIDE ALARM 10 YEAR SEALED BATTERY WIRELESS INTERLINKED

**FIRECHIEF®**  
making the world a safer place

PROTECT YOUR FAMILY WITH  
FIRECHIEF® HOME ALARMS.

MODEL:  
**FCB10W**



FCB10W  
117-2005

- Equipped with electrochemical carbon monoxide sensing technology
- 10 year product lifespan
- 5 year product warranty
- Sealed in 10 year lithium battery
- Wireless interlink with up to 39 other Firechief® Home alarms
- SGS Certified to EN50291-1:2018
- FSC Certified packaging
- Portable – designed to stand on a flat surface – doesn't need to be fixed in 1 location
- Compatible with Firechief® Home Alarm Locate remote



10-YEAR  
BATTERY LIFE



WIRELESS  
WHOLE-HOUSE  
SAFETY



5-YEAR  
WARRANTY



AUDIBLE &  
VISUAL ALERTS



LOCATE  
COMPATIBLE



**Fire and Safety  
Centre**

#### Available From:

Fire and Safety Centre

15 Atkinsons Way, Foxhills Industrial Estate  
Scunthorpe, North Lincolnshire, DN15 8QJ

Tel: 01724 281044 Web: [www.fireandsafetycentre.co.uk](http://www.fireandsafetycentre.co.uk)

Email: [sales@fireandsafetycentre.co.uk](mailto:sales@fireandsafetycentre.co.uk)

# FIRECHIEF® CARBON MONOXIDE ALARM 10 YEAR SEALED BATTERY WIRELESS INTERLINKED

**FIRECHIEF®**  
making the world a safer place

**TRUST FIRECHIEF® HOME ALARMS TO  
KEEP YOUR FAMILY SAFE.**

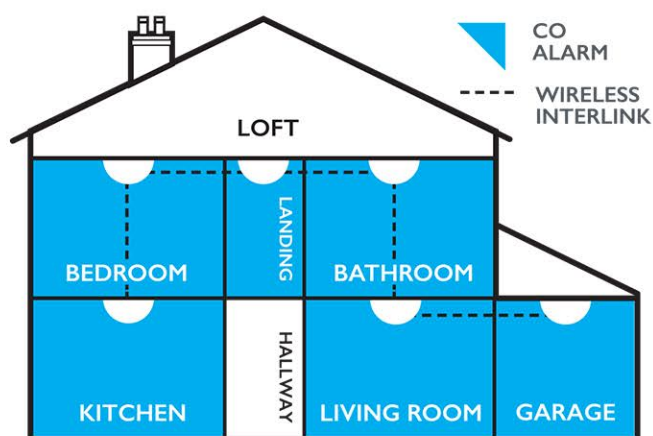
Enhance your home safety with the Firechief® Wireless Carbon Monoxide Alarm, an advanced device designed to detect and alert you to dangerous carbon monoxide levels. Featuring high-precision sensors for accurate detection, this alarm offers wireless interlinked connectivity. Its easy installation requires no complex wiring, ensuring a quick and seamless setup.

The FCB10W is equipped with a loud audible alarm and LED indicators to provide immediate notification in case of danger. Its sleek, compact design fits effortlessly into any home decor, offering both functionality and aesthetic appeal. Rely on Firechief's cutting-edge technology to deliver peace of mind and robust protection for you and your family.

## What do I need, and where?

Based on current best practice, and ongoing legislative reforms, the Firechief® Home Safety Team recommends that you should:

Install Firechief® Home Carbon Monoxide Alarms on each floor of your house and in every room that contains a fuel burning appliance such as boilers, cookers, heaters, gas fires and solid fuel burners.



**MODEL:  
FCB10W**



## SPECIFICATION

Model	FCB10W
Product Code	117-2005
Description	Firechief® Carbon Monoxide Alarm 10 Year Sealed Battery Wireless Interlinked
Power	DC 3V Lithium battery (battery not replaceable)
Battery life	10 Years
Alarm Volume	>85dB at 3 metres
Hush/Silence Time	10 minutes (unless CO levels exceed 150 ppm)
Apparatus style	Type B
Sensor	Electrochemical
Product lifespan	10 years after initial activation
Wireless interlink	Interlink up to a maximum of 40 alarms from the Firechief® Home Wireless range of alarms.
RF frequency:	433 MHz
Operational Ambient Condition:	0~40°C, 25~90%R.H
Dimensions (mm)	93(h) x 93(h) x 30(d)

**Note:** This apparatus is designed to protect individuals from the acute effects of carbon monoxide exposure. It will not fully safeguard individuals with specific medical conditions. If in doubt consult a medical practitioner.

**Operating temperature and humidity:**  
0-40°C, 25-90% (without condensation)

**Storage/transportation temperature and humidity:**  
0-40°C, 25-90% (without condensation)

**Product lifetime:** 10 years after initial activation



**Fire and Safety  
Centre**

## Available From:

Fire and Safety Centre  
15 Atkinsons Way, Foxhills Industrial Estate  
Scunthorpe, North Lincolnshire, DN15 8QJ  
**Tel:** 01724 281044 **Web:** [www.fireandsafetycentre.co.uk](http://www.fireandsafetycentre.co.uk)  
**Email:** [sales@fireandsafetycentre.co.uk](mailto:sales@fireandsafetycentre.co.uk)



# FIRECHIEF® HEAT ALARM 10 YR SEALED BATTERY WIRELESS INTERLINKED

**FIRECHIEF®**  
making the world a safer place

PROTECT YOUR FAMILY WITH  
FIRECHIEF® HOME ALARMS.

MODEL:  
**FHB10W**



FCB10W  
117-2003

- Equipped with thermistor heat sensing technology
- Wireless interlink with up to 39 other Firechief® Home alarms
- Sealed in 10 year lithium battery
- 5 year warranty
- BSI Kitemarked to BS 5446-2:2003
- FSC Certified packaging
- Compatible with Firechief® Home Alarm Locate remote



UK  
CA CE



**Fire and Safety  
Centre**

#### Available From:

Fire and Safety Centre  
15 Atkinsons Way, Foxhills Industrial Estate  
Scunthorpe, North Lincolnshire, DN15 8QJ  
**Tel:** 01724 281044 **Web:** [www.fireandsafetycentre.co.uk](http://www.fireandsafetycentre.co.uk)  
**Email:** [sales@fireandsafetycentre.co.uk](mailto:sales@fireandsafetycentre.co.uk)

# FIRECHIEF® HEAT ALARM 10 YR SEALED BATTERY WIRELESS INTERLINKED



## TRUST FIRECHIEF® HOME ALARMS TO KEEP YOUR FAMILY SAFE.

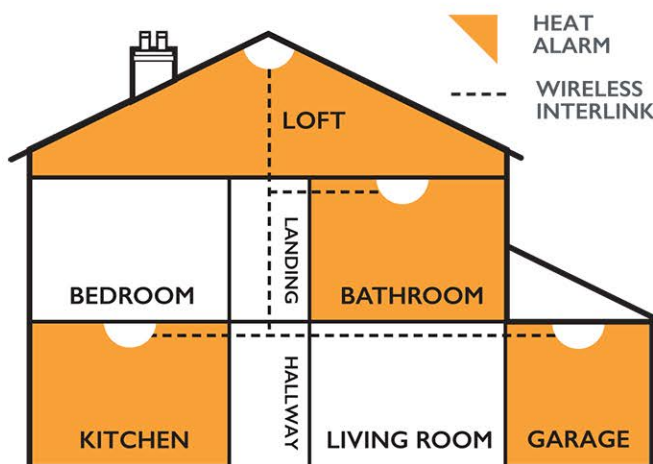
Protect your home with the Firechief® Heat Alarm, an innovative solution designed to detect abnormal temperature rises, ensuring early fire detection. This advanced alarm offers wireless connectivity for seamless integration with your home alarm system. The device features high-precision heat sensors, easy installation without complex wiring, and a long-lasting battery for uninterrupted protection.

The FHB10W is equipped with a loud audible alarm and LED indicators to ensure immediate notification in case of danger. Its sleek, compact design blends effortlessly with any home decor, combining functionality with modern aesthetics. Rely on Firechief® Home Alarms to safeguard your home, delivering peace of mind and reliable protection for you and your family.

### What do I need, and where?

Based on current best practice, and ongoing legislative reforms, the Firechief® Home Safety Team recommends that you should:

Install Firechief® Home wireless heat alarms in each kitchen area, garage, loft space, boiler room, and other areas where there are high levels of dust, fumes, steam and where smoke alarms cannot be installed without the risk of excessive nuisance alarms.



## MODEL: FHB10W



### SPECIFICATION

Model	<b>FHB10W</b>
Product Code	117-2001
Description	Firechief® Heat Alarm 10 Year Sealed Battery Wireless Interlinked
Power	Built-in DC 3V(CR17450G) Lithium battery (battery not replaceable)
Alarm Volume:	>85dB (A) at 3 metres
Alarm Sensitivity:	54°C to 70°C
Hush/Silence Time:	approx. 8 minutes
Certified to:	BS 5446-2:2003
Sound Pattern:	ISO8201 (Beep 0.5s - pause 0.5s - Beep 0.5s – pause, 0.5s – Beep 0.5s - pause 1.5s, with the RED LED flash, repeat this alarm pattern)
Alarm sound pattern:	Beep - Beep - pause 0.5s, Beep - Beep - pause 0.5s, Beep - Beep - pause 1.5s, with the red LED flash, repeat this alarm pattern.
Dimensions (mm)	Φ 120*45mm



**Fire and Safety  
Centre**

### Available From:

Fire and Safety Centre  
15 Atkinsons Way, Foxhills Industrial Estate  
Scunthorpe, North Lincolnshire, DN15 8QJ  
**Tel:** 01724 281044 **Web:** [www.fireandsafetycentre.co.uk](http://www.fireandsafetycentre.co.uk)  
**Email:** [sales@fireandsafetycentre.co.uk](mailto:sales@fireandsafetycentre.co.uk)



# FIRECHIEF® SMOKE ALARM 10 YR SEALED BATTERY WIRELESS INTERLINKED

**FIRECHIEF®**  
making the world a safer place

PROTECT YOUR FAMILY WITH  
FIRECHIEF® HOME ALARMS.

MODEL:  
**FSB10W**



FSB10W  
117-2000

- Equipped with optical smoke sensing technology
- Wireless interlink with up to 39 other Firechief® Home alarms
- Sealed in 10 year lithium battery
- 5 year warranty
- BSI Kitemarked to BS EN 14604:2005 + AC:2008
- Has dust compensation technology, designed to learn the environment and reduce the number of false alarms
- FSC certified packaging
- Compatible with Firechief® Home Alarm Locate remote



**Fire and Safety  
Centre**

#### Available From:

Fire and Safety Centre

15 Atkinsons Way, Foxhills Industrial Estate  
Scunthorpe, North Lincolnshire, DN15 8QJ

Tel: 01724 281044 Web: [www.fireandsafetycentre.co.uk](http://www.fireandsafetycentre.co.uk)

Email: [sales@fireandsafetycentre.co.uk](mailto:sales@fireandsafetycentre.co.uk)

# FIRECHIEF® SMOKE ALARM 10 YR SEALED BATTERY WIRELESS INTERLINKED



## TRUST FIRECHIEF® HOME ALARMS TO KEEP YOUR FAMILY SAFE.

Secure your home with the Firechief® Smoke Alarm, an advanced solution for early fire detection. This smoke alarm can wirelessly interlink with up to 39 other Firechief® Home Alarms. It is easy to install and requires no complex wiring, making it quick and convenient to set up, while the long-lasting battery provides continuous, reliable protection.

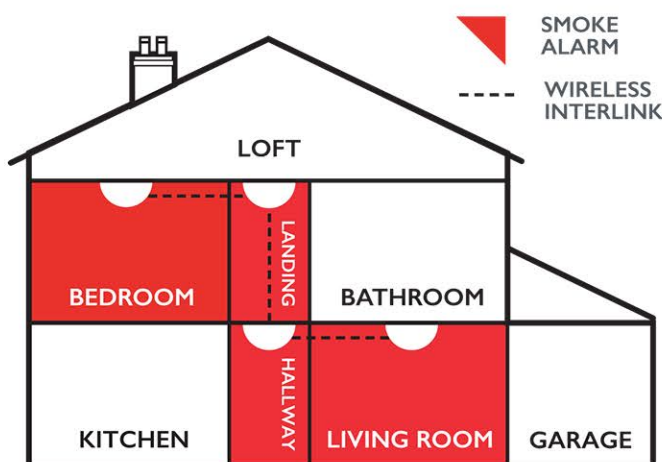
The FSB10W is designed with a loud audible alarm and LED indicators to immediately notify you of potential danger. Its sleek and compact design blends seamlessly with any home decor, combining aesthetic appeal with essential functionality. Depend on Firechief® Home Alarms to deliver peace of mind and robust protection for you and your family.

### What do I need, and where?

Based on current best practice, and ongoing legislative reforms, the Firechief® Home Safety Team recommends that you should:

Install Firechief® Home wireless smoke alarms in the rooms most frequently used during the daytime, such as living rooms, dining rooms, and bedrooms.

Install Firechief® Home wireless smoke alarms in every circulation space on each storey such as hallways and landings.



## MODEL: FSB10W



### SPECIFICATION

Model	<b>FSB10W</b>
Product Code	117-2000
Description	Firechief® Smoke Alarm 10 Year Sealed Battery Wireless Interlinked
Power	built-in DC 3V(CR17450) Lithium battery (battery not replaceable)
Alarm Volume:	>85dB (A) at 3 metres
Alarm Sensitivity:	0.10-0.16dB/m
Hush/Silence Time:	approx. 8 minutes
Certified to:	EN14604:2005/AC: 2008
Sound Pattern:	ISO8201 (Beep 0.5s - pause 0.5s - Beep 0.5s - pause, 0.5s - Beep 0.5s - pause 1.5s, with the RED LED flash, repeat this alarm pattern)
Alarm sound pattern:	Beep - Beep - pause 0.5s, Beep - Beep - pause 0.5s, Beep - Beep - pause 1.5s, with the red LED flash, repeat this alarm pattern.
Dimensions (mm)	Φ 120*28mm



**Fire and Safety  
Centre**

### Available From:

Fire and Safety Centre  
15 Atkinsons Way, Foxhills Industrial Estate  
Scunthorpe, North Lincolnshire, DN15 8QJ  
**Tel:** 01724 281044 **Web:** [www.fireandsafetycentre.co.uk](http://www.fireandsafetycentre.co.uk)  
**Email:** [sales@fireandsafetycentre.co.uk](mailto:sales@fireandsafetycentre.co.uk)