



USER MANUAL

Product code: 117-2005 Model: FCB10W

FIRECHIEF®
making the world a safer place

Thank you for purchasing this Firechief® Home Carbon Monoxide (CO) Alarm. Before installation, take a few minutes to read this user manual thoroughly and familiarise yourself and your family with its operation. Please save it for future reference.



EN50291-1:2018

SPECIFICATION

Power:	DC 3V Lithium battery (battery not replaceable)
Battery Life:	10 Years
Apparatus Type:	Type B
Sensor:	Electrochemical
Product Lifespan:	10 years after initial activation
Operational Condition:	Ambient -10-40°C, 15-93% R.H
Note:	This carbon monoxide alarm is designed to detect carbon monoxide gas from any source of combustion. It is not designed to detect any other gases.
Wireless interlink:	Interlink up to a maximum of 40 alarms from the Firechief Home Wireless range of alarms.
RF frequency:	433 MHz

INSTALLATION LOCATION GUIDE

The following suggestions are intended to help you to position and install your alarm.

1. Place out of the reach of children. Under no circumstance should children be allowed to handle the alarm.
2. Install in a bedroom or hallway located close to the sleeping area. Take special care to verify the alarm can be heard in sleeping areas.
3. It is recommended that an alarm be installed on each storey of the house.
4. Locate at least 1.5 metres away from all fuel burning appliances.
5. Placing at eye level allows for optimum monitoring of the red, green and yellow indicator lights.
6. Do not install in dead air spaces such as peaks of vaulted ceilings or gabled roofs where fumes do not collect.
7. Do not install in turbulent air from ceiling fans.
8. Do not place near fresh air vents or close to doors and windows that open to the outside.
9. Keep the alarm away from excessively dusty, dirty, or greasy areas. Dust, grease and household chemicals can affect the sensor.
10. Keep out of damp and humid areas such as the bathroom. Avoid spraying aerosols near the alarm.
11. Do not install in areas where the temperature is below -10°C or higher than 40°C.
12. Do not place behind curtains or furniture. Carbon monoxide must be able to reach the sensor for the alarm to accurately detect the carbon monoxide levels.

INSTALLATION INSTRUCTIONS:

Caution: The alarm should be installed by a competent person.

NOTE: Please pair all wireless alarms before installing in final locations – see instructions below.

Installation Location

When choosing your installation locations, make sure you can hear the alarm from all sleeping areas. If you install only one carbon monoxide alarm in your home, install the alarm near bedrooms, not in the basement. This alarm must be mounted on a ceiling or wall.

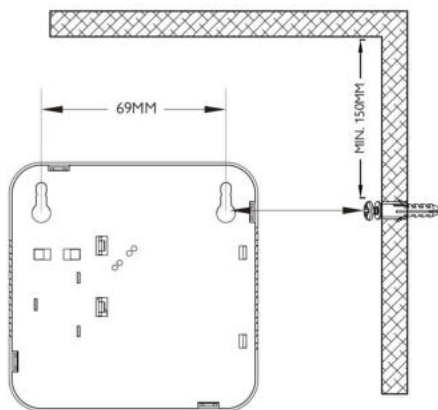


DIAGRAM 1

Mounting the Alarm

1. Referring to Diagram 1, mark two level fixing positions 69mm apart in the desired installation position.
2. Drill two 5mm holes in the marked positions with a suitable drill and then insert two plastic fixing plugs into the holes.

3. Screw in the screws provided until the head is standing out about 5mm from the surface being fixed to.
4. Mount the alarm on the two screws by placing the keyhole cutouts on the rear of the alarm over the screw heads and sliding the alarm downwards.
5. Now activate the alarm.

Activation and testing

CAUTION: This alarm MUST be 'activated' before entering use, otherwise it will not function.

1. Press and hold the TEST/HUSH button for 3 seconds. When the red LED lights up release the TEST/HUSH button immediately. All three LEDs will then light up in turn indicating successful start-up.
2. The product will then enter a preheating state for 5 minutes. The red LED will flash once every 4 seconds whilst in this state.
3. The green LED light will then flash once within 50 seconds which indicates normal operation.
4. Having confirmed that the alarm is in normal operation, now test the alarm test the alarm by pressing the TEST/HUSH button on the front of the alarm. The red LED will flash and the alarm will sound. The alarm signal pattern is 4 quick beeps followed by 1.5 seconds of silence.

Note: It is important to test the alarm using the TEST/HUSH button immediately following installation, to ensure the alarm is working correctly.

WIRELESS INTERLINK SET UP

NOTE: Please pair all alarms before installing in final locations.

1. Ensure product activation is complete as above.
2. Select one of the alarms as the MASTER alarm (make a note of which alarm is the MASTER). Treat all other alarms as SLAVE alarms.
3. Press the TEST/HUSH button on the MASTER unit three times within two seconds and the red LED will start to flash quickly. The alarm is now in pairing mode and ready to be paired to SLAVE alarms. The MASTER alarm will remain in this mode for 90 seconds.
4. While the MASTER unit is in pairing mode, press the TEST/HUSH button on any SLAVE alarm three times within two seconds. The SLAVE alarm learns this signal and connects to the MASTER alarm. Pairing is complete after a 'beep' is heard and the LED will flash once.
5. Repeat the above steps on all remaining SLAVE alarms.

To cancel the wireless interlink between alarms

Press the Hush/Test button on any SLAVE alarm three times within two seconds, the red LED will start to flash quickly. Then press and hold the Hush/Test button again until the red light goes out and then release the button immediately. The red LED will then flash slowly. Then press the Hush/Test button again, and the SLAVE alarm will 'beep' 3 times. This indicates that the SLAVE alarm is no longer interlinked with the other alarms.

CAUTION:

This alarm MUST be 'activated' before entering use, otherwise it will not function. This carbon monoxide alarm is designed to be wirelessly interlinked with up to 40 other alarms in one system. This alarm is not designed to communicate with wireless alarms from other brands or manufacturers. These alarms need to be in pairing mode or interlinked in order to communicate with each other. If one alarm activates, all other interlinked alarms will also sound. Only successfully interlinked alarms can cancel the wireless interlink. Cancelling the wireless interlink only removes the wireless interlink from the SLAVE alarm. The MASTER alarm cannot cancel the wireless interlink.

TEST/HUSH BUTTON

The TEST/HUSH button is used to test the alarm electronics and to hush the alarm during an alarm event.

Testing the alarm

To test the alarm, press and release the TEST/HUSH button. You will hear the alarm sound continuously whilst you press the button, along with a red LED flashing. The alarm signal pattern is 'BEEP-BEEP-BEEP-BEEP' followed by 1.5 seconds of silence.

Note: The alarm should be tested every month. If at any time your alarm does not function as described, please replace it immediately.

Hush the alarm

If the alarm is sounding, pressing and releasing the TEST/HUSH button will hush the alarm for about 10 minutes. If during that 10 minutes the carbon monoxide concentration is more than 150ppm, the alarm will sound again immediately and repeatedly.

Fault or end-of-life alert

If the FAULT or end-of-life alert is sounding, pressing the TEST/HUSH for 3 seconds will stop the alarm for about 14 hours. The yellow FAULT indicator LED will continue to flash.

LED INDICATOR FUNCTIONS

1. If a dangerous level of carbon monoxide is detected, the alarm will sound and the red ALARM LED will flash continuously and will continue until the carbon monoxide is eliminated.
2. If a battery failure or low battery power is detected, an intermittent 'CHIRP' will sound, with the yellow FAULT LED flashing once every 50 seconds.
3. If a sensor failure is detected, the yellow FAULT LED of the alarm will flash twice, approximately every 50 seconds, and the alarm will sound with two synchronised 'SQUEAK' sounds.
4. When the alarm lifespan expires, the yellow FAULT LED of the alarm will flash three times, approximately every 50 seconds, and the alarm will sound with three synchronised 'SQUEAK' sounds.
5. If the alarm is functioning normally, the green POWER LED will flash once every 50 seconds.

WHAT TO DO IF THE ALARM SOUNDS

WARNING! This device indicates the presence of dangerous levels of carbon monoxide! Carbon monoxide can be fatal!

If the alarm sounds:

1. Push and release the TEST/HUSH button.
2. Switch off or shut down any appliances or apparatus that may be the source of the carbon monoxide and the gas supply.
3. Immediately move to fresh air, by either going outside or standing by an open external door/window. Do a head count to check that all persons are accounted for. Do not re-enter the premises nor move away from the open external door/window until the emergency services have arrived (if called), the premises have been thoroughly aired by opening external doors/windows, and your alarm remains in its normal condition.
4. If after following steps 1-3 your alarm reactivates within a 24 hour period, repeat steps 1-3 and call a qualified appliance technician to investigate/identify the sources of carbon monoxide from fuel burning appliances/equipment. They should inspect all appliances/equipment for proper operation, and if problems are identified during this inspection, please have the equipment repaired/serviced immediately. Record any combustion appliance/equipment that was not inspected by the technician, and consult the manufacturer's instructions or contact the manufacturer directly for more information about carbon monoxide safety and this equipment. Make sure that motor vehicles are not or have not been operating in an attached garage or adjacent to the residence.

GENERAL MAINTENANCE

To keep your carbon monoxide alarm in a good working order, please follow these simple steps:

1. Check the operation of the alarm and LED indicators by pressing the TEST/HUSH button once a month.
2. Clean the alarm cover and vents with a soft brush attachment once a month to remove dust and dirt.
3. Never use detergents or other solvents to clean the alarm.
4. Avoid spraying air fresheners, hair spray, or other aerosols near the alarm.
5. Do not paint the alarm. Paint will seal the vents and interfere with the sensor's ability to detect carbon monoxide. Never attempt to disassemble the alarm or clean inside. This action will void your warranty.
6. As soon as possible, place the alarm back in its proper location to assure continuous protection from carbon monoxide poisoning.
7. When household cleaning supplies or similar contaminants are used, the area should be ventilated. Warning: The following substances can affect the sensor and cause false alarms:

Methane, propane, isobutene, isopropanol, ethylene, benzene, toluene, ethyl acetate, hydrogen sulphide, sulfur dioxides, alcohol based products, paints, thinner, solvents, adhesives, hair sprays, after shaves, perfumes and some cleaning agents.

Warning: Your carbon monoxide alarm will not be operational and will not monitor for carbon monoxide levels without batteries properly installed.

Warning: Tampering with the alarm is dangerous.

Warning: The alarm cannot prevent the chronic effects of exposure to carbon monoxide.

Warning: The alarm does not protect individuals from a specific risk.

Warning: This alarm is designed to protect individuals from the acute effects of carbon monoxide exposure. It will not fully safeguard individuals with specific medical conditions. If in doubt consult a medical practitioner.

Warning: Installation of this alarm should not be used as a substitute for proper installation, use and maintenance of any fuel burning appliances/equipment, as well as providing appropriate ventilation and exhaust systems where necessary.

CARBON MONOXIDE OVERVIEW

Carbon monoxide cannot be seen, smelt or tasted but can be fatal. The build-up of carbon monoxide in the blood is called carboxyhemoglobin (COHb) formation and interferes with the body's ability to supply itself with oxygen. Depending on the concentration of carbon monoxide, it can kill in minutes. The most common sources of carbon monoxide are malfunctioning gas appliances used for heating and cooking, vehicles running in an attached garage, blocked chimneys or flues, portable fuel burning heaters, open fireplaces, fuel powered tools and operating a cooking grill in an enclosed space. Indications of carbon monoxide poisoning include symptoms similar to the flu, but with no fever. Other symptoms include dizziness, fatigue, weakness, headache, nausea, vomiting, sleepiness and confusion. Everyone is susceptible to the danger of carbon monoxide, but experts agree that unborn babies, small children, pregnant women, senior citizens and people with heart or respiratory problems are at the highest risk for serious injury or death. Each year a qualified technician should inspect and clean your heating system, vents, chimney, and flues. The following symptoms are related to CARBON MONOXIDE POISONING and should be discussed with ALL members of the household:

35 PPM: The maximum allowable concentration for continuous exposure for healthy adults in any 8 hour period.

200 PPM: Slight headaches, fatigue, dizziness, nausea after 2-3 hours.

400 PPM: Frontal headaches within 1-2 hours, life threatening after 3 hours.

800 PPM: Dizziness, nausea and convulsions within 45 minutes. Unconsciousness within 2 hours. Death within 3 hours.

1600 PPM: Headache, dizziness and nausea within 20 minutes. Death within 1 hour.

6400 PPM: Headache, dizziness and nausea within 1-2 minutes. Death within 10-15 minutes.

The above levels of exposure relate to healthy adults. Levels differ for those at high risk. Exposure to high levels of carbon monoxide can be fatal or cause permanent damage and disabilities. Many cases of reported carbon monoxide poisoning indicate that while victims are aware they are not well, they become so disoriented they are unable to save themselves by either exiting the building, or calling for assistance. Also, young children and household pets may be the first effected. Familiarisation with the effects of each level is important.

WARRANTY INFORMATION

Manufacturer warranty to the original consumer.

Each new purchased heat alarm device shall be free from defects in material and workmanship under normal use and service for a period of 5 years from the date of purchase. This warranty does not cover damage resulting from accidents, misuse or abuse or lack of reasonable care of the product. In no case shall the manufacturer be liable for any incidental or consequential damages for breach of this or any other warranty express or implied, whatsoever.

Proper disposal will prevent possible harm to the environment or to human health. When disposing of this product please separate it from other waste streams to ensure that it can be recycled in an environmentally sound manner. This warranty is given by the manufacturer Firechief Global, a trading entity of Sentura Group Ltd ("we, us or our"), registered office at 3 Lands End Way, Oakham, Rutland LE15 6RB to the person originally buying the goods ("you or your") from us or our approved distributor. This warranty is applicable to the products in the Firechief Alarm range purchased in the United Kingdom.



**Fire and Safety
Centre**

Available From:

Fire and Safety Centre

15 Atkinsons Way, Foxhills Industrial Estate

Scunthorpe, North Lincolnshire, DN15 8QJ

Tel: 01724 281044 **Web:** www.fireandsafetycentre.co.uk

Email: sales@fireandsafetycentre.co.uk



USER MANUAL

Product code: 117-2001 Model: FHB10W

FIRECHIEF®
making the world a safer place

Thank you for purchasing the Firechief® Home Wireless Heat Alarm. Before installation, take a few minutes to read this user manual thoroughly and familiarise yourself and your family with its operation. Please save it for future reference.



KM 803385
BS 5446-2



SPECIFICATIONS:

Power: Built-in DC 3V(CR17450) Lithium battery (battery not replaceable)

Alarm Volume: >85dB (A) at 3 metres

Alarm Sensitivity: 54°C to 65°C

Hush/Silence Time: Approx. 8 minutes

Certified to: BS 5446-2:2003

Sound Pattern: ISO8201 (Beep 0.5s - pause 0.5s - Beep 0.5s - pause 0.5s - Beep 0.5s - pause 1.5s, with the RED LED flash, repeat this alarm pattern)

Alarm sound pattern: Beep - Beep - pause 0.5s, Beep - Beep - pause 0.5s, Beep - Beep - pause 1.5s, with the red LED flash, repeat this alarm pattern.

DESCRIPTION

Heat alarm with sealed in non-replaceable battery. The alarm is to be mounted on to the base provided. This heat alarm can rapidly detect incremental rises in temperature.

INSTALLATION LOCATION GUIDE

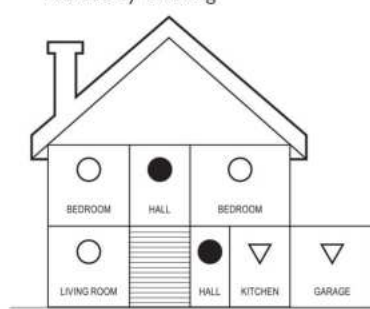
- For best protection heat alarms should be installed as part of a complete fire protection system that also includes smoke alarms. Heat alarms are best suited to areas such as boiler rooms, kitchens, laundry rooms and garages where dust, fumes and moisture can cause nuisance alarms with smoke alarms. Heat alarms should not be installed in escape routes instead of smoke alarms. They should only be used in the above applications and be interlinked to smoke alarms. (Smoke alarms should be installed in circulation areas forming part of escape routes and in every room in the home).
- When heat alarms are installed in a room, they should be placed on the ceiling, ideally in the centre of the room. They should be at a distance no greater than 5.3m from the farthest wall no greater than 5.3m from a door to any room in which a fire might start and no greater than 5.3m from the next heat alarm NOTE: Heat alarms should not be wall mounted.
- Closed doors and other obstructions will interfere with the path of heat to an alarm and may prevent occupants from hearing an alarm on the other side of a closed door. Install sufficient alarms to compensate for closed doors and obstacles.

For further help and information on types and location of fire detection alarms refer to BS 5839-6:2013 in the UK and the current Fire Safety Guidance for your region provided by the relevant Government Departments.

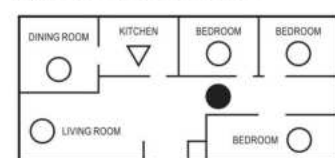
CAUTION: Research indicates that substantial increases in warning time can be obtained with each properly installed additional alarm. It is strongly recommended that the advice above is followed to ensure maximum protection.

IMPORTANT: These heat alarms are intended primarily for use in single occupancy private dwellings. For use in other applications the manufacturers advice should be sought.

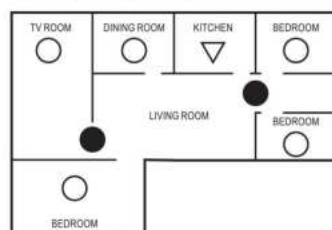
Two storey dwelling



Single storey, one bedroom



Single storey, two bedroom

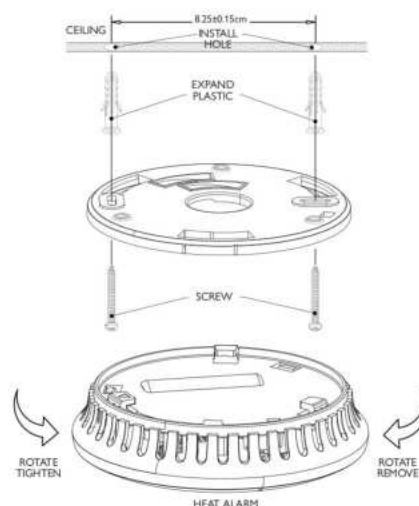


LOCATIONS TO AVOID

DO NOT install heat alarms:

- In turbulent air from fans, heaters, doors, windows, etc.
- In high humidity areas such as bathrooms and shower rooms or where the temperature exceeds 40°C-0°C.
- At the peak of an 'A' frame ceiling - dead air at the top may prevent smoke and heat from reaching the alarm to provide an early warning.
- Less than 30cm from a wall when mounted on the ceiling.
- In very dusty or dirty areas - dirt and excessive dust can impair the performance of the alarm.
- Within 30cm of a light fitting or room corners.
- In locations that would make routine testing or maintenance hazardous (e.g. over a stairwell).
- On poorly insulated ceilings.
- Near objects such as ceiling decorations that might impede the path of heat to the alarm.
- Within 1.5m of a fluorescent light fitting.

Further help and information may be found in BS 5839-6:2013.



INSTALLATION INSTRUCTIONS:

CAUTION: This alarm should be installed by a competent person.

NOTE: Please pair all wireless alarms before installing in final locations – see instructions below.

To activate the Heat Alarm

- Before installing the alarm, it needs to be activated. To do this, press the TEST/HUSH button and hold down for 3 seconds or until the LED indicator shows and a 'beep' is heard.
- Once this has been heard, release the button within 3 seconds, the alarm will 'beep' again, indicating that it has been successfully activated and is now in operational mode.

Wireless Interlink Set Up

- Ensure alarm activation is complete as above for all alarms being interlinked (maximum 40 alarms).
- Select one of the alarms as the MASTER alarm (make a note of which alarm is the MASTER). Treat all other alarms as SLAVE alarms.
- Press the TEST/HUSH button on the MASTER alarm 3 times within 2 seconds and the red LED will start to flash quickly. The alarm is now in pairing mode and ready to be paired to SLAVE alarms. The MASTER alarm will remain in this mode for 90 seconds.
- Whilst the MASTER alarm is in pairing mode, press the TEST/HUSH button on any SLAVE alarm 3 times within 2 seconds. The SLAVE alarm learns this signal and connects to the MASTER alarm. Pairing is complete after a 'beep' is heard and the LED will flash once.
- Repeat the above steps for all remaining SLAVE alarms.

Testing and operation

Note: It is important to test the alarm using the TEST/HUSH button immediately following installation, to ensure the alarm is working correctly, and that any interlinked alarms are connected correctly.

To cancel the wireless interlink between alarms

At times it may be necessary to cancel the wireless link between the alarms – please see steps below to do this.

1. Press the TEST/HUSH button on any SLAVE alarm 3 times within 2 seconds, the red LED will start to flash quickly.
2. Then press and hold the TEST/HUSH button again until the red light goes out and then release the button immediately. The red LED will then flash slowly.
3. Then press the TEST/HUSH button again, and the SLAVE alarm will 'beep' 3 times. This indicates that the SLAVE alarm is no longer interlinked with the other alarms.

CAUTION: This alarm MUST be 'activated' before entering use, otherwise it will not function. This alarm is designed to be wirelessly interlinked with up to 40 alarms in one system.

This alarm is not designed to communicate with wireless alarms from other brands or manufacturers. These alarms need to be in pairing mode or be wirelessly interlinked in order to communicate with each other.

If one alarm activates, all other interlinked alarms will also sound. Only successfully interlinked alarms can cancel the wireless interlink. Cancelling the wireless interlink only removes the wireless interlink from the SLAVE alarm. The MASTER alarm cannot cancel the wireless interlink. FHB10W Heat Alarms can be interconnected all other wireless interlink alarms in the Firechief® Home Alarm range.

Fixing Alarm Mounting Base

WARNING: To prevent injury, this alarm must be securely attached to the ceiling in accordance with the installation instructions.

1. Referring to the diagram provided, remove the mounting base from the bottom of the alarm by twisting it in an anticlockwise direction.
2. Hold the mounting base on the ceiling in the desired installation position and mark the two fixing points of the mounting base.
3. Drill two 5mm holes in the marked positions with a suitable drill and then insert the two plastic fixing plugs into the holes.
4. Fix the mounting base firmly to the ceiling using the screws provided. Ensure it is securely installed.
5. Now attached the alarm to the base by first locating the indicator marks on the alarm and the base, and aligning them. When aligned, the turn the alarm clockwise until it clicks into place and is held firm. The alarm is now operational and ready to be tested.

TEST/HUSH BUTTON

The TEST/HUSH button is used to test the alarm electronics and to hush the alarm during an alarm event.

Testing the alarm

To test the alarm, press and hold the TEST/HUSH button. You will hear the alarm sound continuously whilst you press the button, along with the red LED flashing. The alarm test signal pattern is 'BEEP-BEEP-BEEP' followed by 1.5 seconds of silence. If no alarm sounds, consult the Trouble Shooting section of this manual as the alarm may have defective batteries or other failures. Please replace the alarm if it does not sound when the TEST/HUSH button is pressed.

DO NOT use an open flame to test your alarm, as you could damage the alarm or ignite surrounding combustible materials and start a structural fire.

Note: The alarm should be tested every week. If at any time your alarm does not function as described, please replace it immediately.

Hushing the alarm

WARNING: Before using the alarm HUSH feature, fully identify the source of the heat build-up and make sure that the area is safe.

If the alarm emits the full alarm signal and you are not testing the alarm, the alarm is warning you of a potentially dangerous fire emergency situation that requires your immediate attention. Only use the alarm HUSH function after making sure that there is no ongoing fire emergency situation. Whilst the alarm is sounding, press and release the TEST/HUSH alarm control button in the centre of the alarm. The alarm will be silenced immediately and the red LED will flash approximately every 8 seconds for the next 8 minutes. This feature is to be used only when a safe condition is known to exist. The HUSH feature will silence the alarm for approximately 8 minutes. If during that time a rapid rise in temperature is detected, the alarm will sound again immediately and repeatedly. After 8 minutes the heat alarm will revert to normal operation. If the alarm still detects a dangerous situation the alarm will sound again. If interconnected alarms are installed, the alarm that detects the high temperature and sounds the alarm cannot be inadvertently silenced by the TEST/HUSH button of other alarms. In this case, all of the alarms will continue to sound for as long as a dangerous situation is detected or until the TEST/HUSH button of the initiating alarm is pressed.

If the alarm does not go into HUSH mode and continues to sound its alarm, the heat in the area is too high and a dangerous situation may still exist - take suitable emergency action.

Warning: If there is any question as to the cause of an alarm, it should be assumed that the alarm is due to an actual fire and the dwelling should be evacuated immediately.

LED INDICATOR FUNCTIONS

Normal Condition

The red LED should flash every 54 seconds to show that the alarm is active.

Alarm Condition

When the alarm detects high heat levels, it will sound an audible alarm and the red LED will flash one flash/second. The audible alarm and flashing LED will continue until the detected temperature reduces to normal levels.

Low Battery Condition

IMPORTANT: Your heat alarm requires the battery to have sufficient power to operate correctly.

Should your heat alarm enter a low battery condition, the alarm will emit an audible 'beep' once every 54 seconds with LED flashing once. When this occurs, you must replace the heat alarm immediately. Your heat alarm will continue to warn of this low battery condition for at least 30 days. However, failure to change the alarm after this time would mean your heat alarm may have insufficient power to alert you in a real fire emergency situation.

WARNING: Constant exposures to high or low temperatures or high humidity may reduce the battery life.

Fault indication

The alarm will 'beep' every 54 seconds.

TROUBLE SHOOTING

PROBLEM	SOLUTION
Heat alarm does not sound when tested. NOTE: Push and hold test button for at least 5 seconds while testing.	<ol style="list-style-type: none"> 1. Alarm must be activated before installation. Please check instruction manual and ensure the alarm is active. 2. If there are still failures during warranty, you can return to your retailer. 3. If the unit is out of warranty, please replace with a new alarm.
The alarm 'beeps' and red LED flashes once every 54 seconds.	The battery power is low or there is another fault. Replace the alarm with a new alarm.
Heat alarm sounds when no high heat is present or for no obvious reason.	This could be due to the location of the alarm. Move the alarm to a new location. See the recommended locations for alarms section of this user guide.
Wireless interlink heat alarms do not sound when system is tested.	<ol style="list-style-type: none"> 1. Press and hold Test/Hush button for at least five seconds after the first alarm sounds. 2. See wireless interlink set up section of this user guide.

ROUTINE MAINTENANCE

In addition to weekly testing, the alarm requires periodic cleaning to remove dust, dirt, and debris. Please see guide below:

1. Clean the alarm at least once a month to remove dust, dirt, or debris.
2. Using a vacuum cleaner with the soft brush head, vacuum all sides and covers of the heat alarm.

WHAT TO DO IN CASE OF A FIRE IN YOUR HOME

1. Do not panic and stay calm.
2. Alert small children in the home.
3. Leave immediately by your closest escape route and in accordance with your escape plan.
4. Every second counts – don't waste time getting dressed or picking up valuables.
5. In leaving, don't open any internal doors without first feeling its surface. If it is hot, or if you see smoke seeping through the doorway, don't open that door! Instead, use an alternate escape route in accordance with your escape plan. If the surface of the door is cool, place your shoulder against it, open it slightly and be ready to slam it shut if heat and smoke rush through.
6. If the air contains smoke, stay close to the floor. Breathe shallowly through a cloth, wet if possible.
7. Once outside the property, go to your selected meeting place and make sure everyone is there.
8. Call the Fire Service from your phone or neighbour's home if you don't have your phone with you.
9. Don't return to your home until the Fire Service officials say that it is safe to do so.

CAUTION

1. Heat alarms can reduce the likelihood of a disaster, but they cannot guarantee 100% safety.
2. To ensure your maximum safety, please install all heat alarms exactly according to the instructions in this manual.
3. Keep the alarms clean. Do not allow dust to accumulate and test them at least once a week.
4. If any alarm is not working properly, replace immediately with a new alarm.

WARRANTY INFORMATION

Manufacturer warranty to the original consumer.

Each new purchased heat alarm device shall be free from defects in material and workmanship under normal use and service for a period of 5 years from the date of purchase. This warranty does not cover damage resulting from accidents, misuse or abuse or lack of reasonable care of the product. In no case shall the manufacturer be liable for any incidental or consequential damages for breach of this or any other warranty express or implied, whatsoever.

Proper disposal will prevent possible harm to the environment or to human health. When disposing of this product please separate it from other waste streams to ensure that it can be recycled in an environmentally sound manner. This warranty is given by the manufacturer Firechief Global, a trading entity of Sentura Group Ltd ("we, us or our"), registered office at 3 Lands End Way, Oakham, Rutland LE15 6RB to the person originally buying the goods ("you or your") from us or our approved distributor. This warranty is applicable to the products in the Firechief Alarm range purchased in the United Kingdom.



**Fire and Safety
Centre**

Available From:

Fire and Safety Centre

15 Atkinsons Way, Foxhills Industrial Estate

Scunthorpe, North Lincolnshire, DN15 8QJ

Tel: 01724 281044 Web: www.fireandsafetycentre.co.uk

Email: sales@fireandsafetycentre.co.uk



USER MANUAL

Product code: 117-2000 Model: FSB10W

FIRECHIEF®
making the world a safer place

Thank you for purchasing this Firechief Home Wireless Smoke Alarm. Before installation, take a few minutes to read this user manual thoroughly and familiarise yourself and your family with its operation. Please save it for future reference.

SPECIFICATIONS

Power:	Built-in DC 3V(CR17450) Lithium battery (battery not replaceable)
Alarm Volume:	>85dB (A) at 3 metres
Alarm Sensitivity:	0.10-0.16dB/m
Hush/Silence Time:	Approx. 8 minutes
Certified to:	EN14604:2005/AC: 2008
Sound Pattern:	ISO8201 (Beep 0.5s - pause 0.5s - Beep 0.5s - pause 0.5s - Beep 0.5s - pause 1.5s, with the RED LED flash, repeat this alarm pattern)
Alarm Sound Pattern:	Beep - Beep - pause 0.5s, Beep - Beep - pause 0.5s, Beep - Beep - pause 1.5s, with the red LED flash, repeat this alarm pattern.

DESCRIPTION

Photoelectric smoke alarm with sealed in non-replaceable battery. The alarm is to be mounted on to the base provided. This smoke alarm is particularly sensitive for detecting visible micro-particles (associated with smouldering fires).

INSTALLATION LOCATION GUIDE

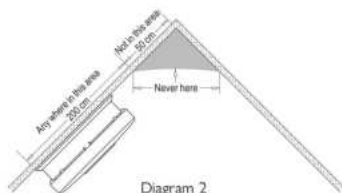
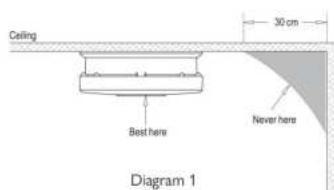
1. The locations must comply with the applicable building regulations which is BS 5839-6:2013 in the UK. This provides guidance on the number, types and positioning of alarms. In general, smoke alarms should be installed in every circulation space such as hallways, landings, bedrooms and principal living spaces (living room). Larger spaces may require the use of more than one alarm.
2. Smoke alarms should be installed on each and every storey of the property.
3. Hot smoke rises and spreads out, so a central ceiling position is the preferred location. The air is 'dead' and does not move into corners, therefore smoke alarms must be mounted away from corners. Position the alarm at least 30cm away from walls and corners and 30cm away from any light fitting or decorative object which may obstruct smoke entering the alarm (see the diagram 1).
4. When the ceiling is slanting, the alarm needs to be installed minimum 50cm away from the highest ceiling point in the room (see diagram 2).

NOTE: This smoke alarm is also suitable for use in leisure vehicles with accommodation.

For further help and information on types and location of fire detection alarms refer to BS 5839-6:2013 in the UK and the current Fire Safety Guidance for your region provided by the relevant Government Departments.

CAUTION: Research indicates that substantial increases in warning time can be obtained with each properly installed additional alarm. It is strongly recommended that the advice above is followed to ensure maximum protection.

IMPORTANT: These smoke alarms are intended primarily for use in single occupancy private dwellings. For use in other applications the manufacturers advice should be sought.

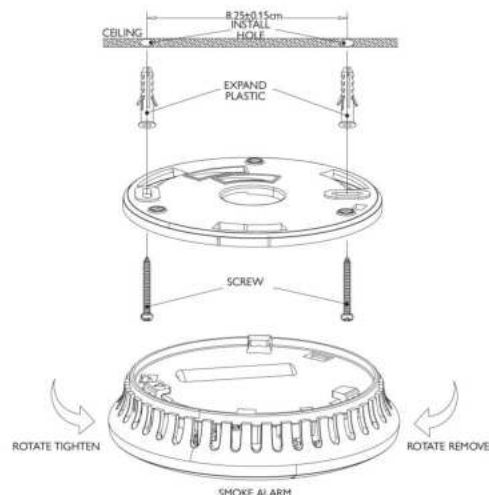


LOCATIONS TO AVOID

DO NOT install smoke alarms:

1. In bathrooms, kitchens, garages or other rooms where the alarm may be triggered by steam, condensation, dust or normal heat/smoke from appliances.
2. Closer than 3 metres from areas with high humidity such as bathrooms, and areas near dishwashers or washing machines.
3. Closer than 1 metre from areas near ventilation air returns or heating and cooling supply vents, as the air movement could blow smoke away from the alarm, therefore interrupting its ability to detect the smoke and raise the alarm.
4. In rooms where temperature may fall below 0°C or rise above 40°C, as this could cause false/nuisance alarms.
5. In extremely dusty, dirty, or insect infested areas where particles may interfere/obstruct the smoke alarm operation.
6. Near air conditioning alarms or ventilation grilles/louvres.

Further help and information may be found in BS 5839-6:2013.



INSTALLATION INSTRUCTIONS:

Caution: This alarm should be installed by a competent person.

NOTE: Please pair all wireless alarms before installing in final locations – see instructions below.

To activate the Smoke Alarm

1. Before installing the alarm, it needs to be activated. To do this, press the TEST/HUSH button and hold down for 3 seconds or until the LED indicator shows and a 'beep' is heard.
2. Once this has been heard, release the button within 3 seconds, the alarm will 'beep' again, indicating that it has been successfully activated and is now in operational mode.

Wireless Interlink Set Up

1. Ensure alarm activation is complete as above for all alarms being interlinked (maximum 40 alarms).
2. Select one of the alarms as the MASTER alarm (make a note of which alarm is the MASTER). Treat all other alarms as SLAVE alarms.
3. Press the TEST/HUSH button on the MASTER alarm 3 times within 2 seconds and the red LED will start to flash quickly. The alarm is now in pairing mode and ready to be paired to SLAVE alarms. The MASTER alarm will remain in this mode for 90 seconds.
4. Whilst the MASTER alarm is in pairing mode, press the TEST/HUSH button on any SLAVE alarm 3 times within 2 seconds. The SLAVE alarm learns this signal and connects to the MASTER alarm. Pairing is complete after a 'beep' is heard and the LED will flash once.
5. Repeat the above steps for all remaining SLAVE alarms.

Testing and operation

Note: It is important to test the alarm using the TEST/HUSH button immediately following installation, to ensure the alarm is working correctly, and that any interlinked alarms are connected correctly.

To cancel the wireless interlink between alarms

At times it may be necessary to cancel the wireless link between the alarms – please see steps below to do this.

1. Press the TEST/HUSH button on any SLAVE alarm 3 times within 2 seconds, the red LED will start to flash quickly.
2. Then press and hold the TEST/HUSH button again until the red light goes out and then release the button immediately. The red LED will then flash slowly.
3. Then press the TEST/HUSH button again, and the SLAVE alarm will 'beep' 3 times. This indicates that the SLAVE alarm is no longer interlinked with the other alarms.

CAUTION: This alarm MUST be 'activated' before entering use, otherwise it will not function. This alarm is designed to be wirelessly interlinked with up to 40 alarms in one system.

This alarm is not designed to communicate with wireless alarms from other brands or manufacturers. These alarms need to be in pairing mode or be wirelessly interlinked in order to communicate with each other.

If one alarm activates, all other interlinked alarms will also sound. Only successfully interlinked alarms can cancel the wireless interlink. Cancelling the wireless interlink only removes the wireless interlink from the SLAVE alarm. The MASTER alarm cannot cancel the wireless interlink. FSB10W Smoke Alarms can be interconnected all other wireless interlink alarms in the Firechief® Home Alarm range.

Fixing Alarm Mounting Base

WARNING: To prevent injury, this alarm must be securely attached to the ceiling in accordance with the installation instructions.

1. Referring to the diagram provided, remove the mounting base from the bottom of the alarm by twisting it in an anticlockwise direction.
2. Hold the mounting base on the ceiling in the desired installation position and mark the two fixing points of the mounting base.
3. Drill two 5mm holes in the marked positions with a suitable drill and then insert the two plastic fixing plugs into the holes.
4. Fix the mounting base firmly to the ceiling using the screws provided. Ensure it is securely installed.
5. Now attach the alarm to the base by first locating the indicator marks on the alarm and the base and aligning them. When aligned, turn the alarm clockwise until it clicks into place and is held firm. The alarm is now operational and ready to be tested.

TEST/HUSH BUTTON

The TEST/HUSH button is used to test the alarm electronics and to hush the alarm during an alarm event.

Testing the alarm

To test the alarm, press and hold the TEST/HUSH button. You will hear the alarm sound continuously whilst you press the button, along with the red LED flashing. The alarm test signal pattern is 'BEEP-BEEP-BEEP' followed by 1.5 seconds of silence. If no alarm sounds, consult the Trouble Shooting section of this manual as the alarm may have defective batteries or other failures. Please replace the alarm if it does not sound when the TEST/HUSH button is pressed.

DO NOT use an open flame to test your alarm, as you could damage the alarm or ignite surrounding combustible materials and start a structural fire.

Note: The alarm should be tested every week. If at any time your alarm does not function as described, please replace it immediately.

Hushing the alarm

WARNING: Before using the alarm HUSH feature, fully identify the source of the smoke and make sure that the area is safe.

Smoke alarms can sometimes react to cooking fumes or other non-emergency situations. If the alarm emits the full alarm signal and you are not testing the alarm, the alarm is warning you of a potentially dangerous fire emergency situation that requires your immediate attention. In the event of a known false alarm, your smoke alarm can be temporarily silenced by pressing the TEST/HUSH button. Do not block the vents on the alarm or disable the smoke alarm in any way, as this will remove your protection. Whilst the alarm is sounding, press and release the TEST/HUSH button in the centre of the alarm. The alarm will be silenced immediately, and the red LED will flash approximately every 8 seconds for the next 8 minutes. This feature is to be used only when a safe condition is known to exist. After 8 minutes the alarm will revert to normal operation. If the alarm still detects a dangerous situation the alarm will sound again.

If interconnected alarms are installed, the alarm that detects the smoke and sounds the alarm cannot be inadvertently silenced by the TEST/HUSH button of other alarms. In this case, all of the alarms will continue to sound for as long as a dangerous situation is detected or until the TEST/HUSH button of the initiating alarm is pressed.

Warning: If there is any question as to the cause of an alarm, it should be assumed that the alarm is due to an actual fire emergency situation and the dwelling should be evacuated immediately.

LED INDICATOR FUNCTIONS

Normal Condition

The red LED should flash every 48 seconds to show that the alarm is active.

Alarm Condition

When the alarm detects products of combustion (smoke), it will sound an audible alarm and the red LED will flash one flash/second. The audible alarm and flashing LED will continue until the air has become clear of smoke.

Low Battery Condition

IMPORTANT: Your smoke alarm requires the battery to have sufficient power to operate correctly.

Should your smoke alarm enter a low battery condition, the alarm will emit an audible 'beep' once every 48 seconds with the LED flashing once. When this occurs, you must replace the alarm immediately. Your smoke alarm will continue to warn of this low battery condition for at least 30 days. However, failure to change the alarm after this time would mean your smoke alarm may have insufficient power to alert you in a real fire emergency situation.

WARNING: Constant exposures to high or low temperatures or high humidity may reduce the battery life.

Fault indication

The alarm will 'beep' every 48 seconds

TROUBLESHOOTING

PROBLEM	SOLUTION
Smoke alarm does not sound when tested. NOTE: Push and hold TEST/HUSH button for at least 5 seconds while testing.	<ol style="list-style-type: none">1. Alarm must be activated before installation. Please check instruction manual and ensure the alarm is active.2. If the alarm is out of warranty, please replace with a new alarm.3. If there are still failures during warranty, you can return the alarm to your retailer.
The alarm 'beeps' and red LED flashes once every 48 seconds.	<ol style="list-style-type: none">1. Clean smoke alarm as in the maintenance and cleaning section of these instructions.2. If the problem persists, the battery power is low or there could be another fault. Replace the alarm with a new alarm.
Smoke alarm sounds intermittently when no smoke is present or when residents are cooking, taking showers, etc.	<ol style="list-style-type: none">1. Press the TEST/HUSH button to hush the alarm.2. Clean smoke alarm as in the maintenance and cleaning section of these instructions.3. This could be due to the location of the alarm.4. Move the alarm to a new location. See the recommended locations for alarms section of this user guide.
Wireless interlink smoke alarms do not sound when system is tested.	<ol style="list-style-type: none">1. Press and hold TEST/HUSH button for at least five seconds after the first alarm sounds.2. See wireless interlink set up section of this user guide and check all alarms are correctly interlinked.

ROUTINE MAINTENANCE

In addition to weekly testing, the alarm requires periodic cleaning to remove dust, dirt, and debris. Please see guide below:

1. Clean the alarm at least once a month to remove dust, dirt, or debris.
2. Using a vacuum cleaner with the soft brush head, vacuum all sides and covers of the smoke alarm.

WHAT TO DO IN CASE OF A FIRE IN YOUR HOME

1. Do not panic and stay calm.
2. Alert small children in the home.
3. Leave immediately by your closest escape route and in accordance with your escape plan.
4. Every second counts – don't waste time getting dressed or picking up valuables.
5. In leaving, don't open any internal doors without first feeling its surface. If it is hot, or if you see smoke seeping through the doorway, don't open that door! Instead, use an alternate escape route in accordance with your escape plan. If the surface of the door is cool, place your shoulder against it, open it slightly and be ready to slam it shut if heat and smoke rush through.
6. If the air contains smoke, stay close to the floor. Breathe shallowly through a cloth, wet if possible.
7. Once outside the property, go to your selected meeting place and make sure everyone is there.
8. Call the Fire Service from your phone or neighbour's home if you don't have your phone with you.
9. Don't return to your home until the Fire Service officials say that it is safe to do so.

CAUTION

1. Photoelectric smoke alarms can reduce the likelihood of a disaster, but they cannot guarantee 100% safety.
2. To ensure your maximum safety, please install all smoke alarms exactly according to the instructions in this manual.
3. Keep the alarms clean. Do not allow dust to accumulate and test them at least once a week.
4. If any alarm is not working properly, replace immediately with a new alarm.

WARRANTY INFORMATION

Manufacturer warranty to the original consumer.

Each new purchased smoke alarm device shall be free from defects in material and workmanship under normal use and service for a period of 5 years from the date of purchase. This warranty does not cover damage resulting from accidents, misuse or abuse or lack of reasonable care of the product. In no case shall the manufacturer be liable for any incidental or consequential damages for breach of this or any other warranty express or implied, whatsoever.

Proper disposal will prevent possible harm to the environment or to human health. When disposing of this product please separate it from other waste streams to ensure that it can be recycled in an environmentally sound manner.

This warranty is given by the manufacturer Firechief Global, a trading entity of Sentura Group Ltd ("we, us or our"), registered office at 3 Lands End Way, Oakham, Rutland LE15 6RB to the person originally buying the goods ("you or your") from us or our approved distributor. This warranty is applicable to the products in the Firechief Alarm range purchased in the United Kingdom.



**Fire and Safety
Centre**

Available From:

Fire and Safety Centre

15 Atkinsons Way, Foxhills Industrial Estate

Scunthorpe, North Lincolnshire, DN15 8QJ

Tel: 01724 281044 Web: www.fireandsafetycentre.co.uk

Email: sales@fireandsafetycentre.co.uk