

FIRECHIEF® SMOKE ALARM MAINS POWERED

FIRECHIEF®

making the world a safer place

PROTECT YOUR FAMILY WITH
FIRECHIEF® HOME ALARMS.



FSM10W
117-2002

MODEL: FSM10W

- Equipped with optical smoke sensing technology
- Sealed in 10 year lithium battery backup
- Has dust compensation technology, designed to learn the environment and reduce the number of false alarms
- BSI Kitemarked to BS EN 14604:2005 + AC:2008
- Wireless interlink with up to 39 other Firechief® Home alarms
- FSC certified packaging
- Compatible with Firechief® Home Alarm Locate remote



10-YEAR
BATTERY
BACKUP



WIRELESS
WHOLE-HOUSE
SAFETY



5-YEAR
WARRANTY



AUDIBLE &
VISUAL ALERTS



LOCATE
COMPATIBLE

Requires installation by
a qualified electrician



**Fire and Safety
Centre**

Available From:

Fire and Safety Centre
15 Atkinsons Way, Foxhills Industrial Estate
Scunthorpe, North Lincolnshire, DN15 8QJ
Tel: 01724 281044 Web: www.fireandsafetycentre.co.uk
Email: sales@fireandsafetycentre.co.uk

FIRECHIEF® SMOKE ALARM MAINS POWERED



TRUST FIRECHIEF® HOME ALARMS TO KEEP YOUR FAMILY SAFE.

Secure your home with the Firechief® Smoke Alarm, an advanced solution for early fire detection. This smoke alarm can wirelessly interlink with up to 39 other Firechief® Home alarms. This alarm is a wired alarm, meaning that it requires installation by a qualified electrician. It also carries a 10-year lithium-ion battery backup, meaning that the alarm will provide continuous, reliable protection.

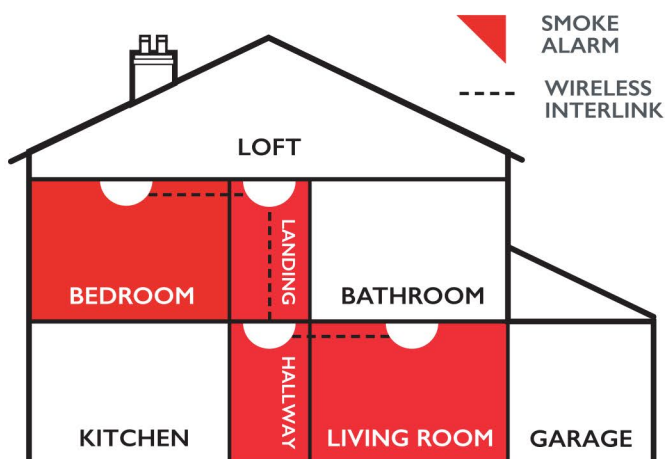
The FSM10W is designed with a loud audible alarm and LED indicators to immediately notify you of potential danger. Its sleek and company design blends seamlessly with any home décor, combining aesthetic appeal with critical functionality.

What do I need, and where?

Based on current best practice, and ongoing legislative reforms, the Firechief® Home Safety Team recommends that you should:

Install Firechief® Home wireless smoke alarms in the rooms most frequently used during the daytime, such as living rooms, dining rooms, and bedrooms.

Install Firechief® Home wireless smoke alarms in every circulation space on each storey such as hallways and landings.



MODEL: FSM10W



SPECIFICATION

Model	FSM10W
Product Code	117-2002
Description	Firechief® Smoke Alarm Mains Powered
Power	220-240V AC 50-60Hz with 3V battery backup
Alarm Volume:	>85dB (A) at 3 metres
Hush/Silence Time:	approx. 8 minutes
Sensor life	10 years
Certified to:	EN 14604:2005/AC: 2008
Sound Pattern:	ISO8201 (Beep 0.5s - pause 0.5s - Beep 0.5s - pause 0.5s - Beep 0.5s - pause 1.5s, with the red LED flashing, repeat this alarm pattern.)
Alarm sound pattern:	Beep - Beep - pause 0.5s, Beep - Beep - pause 0.5s, Beep - Beep - pause 1.5s, without the red LED flash, repeat this alarm pattern.
Dimensions (mm)	Φ 140*40mm



**Fire and Safety
Centre**

Available From:

Fire and Safety Centre
15 Atkinsons Way, Foxhills Industrial Estate
Scunthorpe, North Lincolnshire, DN15 8QJ
Tel: 01724 281044 **Web:** www.fireandsafetycentre.co.uk
Email: sales@fireandsafetycentre.co.uk