

High specification Emergency Access Systems



LEADING THE FUTURE OF FIRE SAFETY



OUR STORY	<u>4-5</u>	PREMISES INFORMATION BOX (HSS PIB®C)	<u>6-7</u>	EMERGENCY RESPONSE PACK	<u>8-9</u>
WAYFINDER SIGNAGE	<u>10-11</u>	PREMISES INFORMATION BOX™ (PIB)®	<u>12-13</u>	FIREFIGHTER ACCESS SWITCH	<u>14-15</u>
ACCESS CONTROL BOX	<u>16-17</u>	EACIE ENCLOSURE™	<u>18-19</u>	THE H SYSTEM	<u>20-21</u>
BARRIER GATE LOCK SYSTEM	<u>22-23</u>	EMERGENCY ACCESS SYSTEMS	<u>24-25</u>	THE GSP ONE KEY® SYSTEM	<u>26-27</u>
OFFICE LOCATIONS	<u>28-29</u>	MANUFACTURING & ASSEMBLY	<u>30-31</u>		



LEADERS IN FIRE SAFETY OUR STORY

Gerda Security Products is committed to making the built environment a safer place to live, by providing the best quality fire safety and security products and services with outstanding value. We are a leading British manufacturer of high specification, top performance fire doorsets and specialist in Emergency Access Products.

We design and develop our products to offer proven solutions for the built environment. Our innovative

designs are extensively tested and independently third party certified, to provide reliable solutions for the built environment. In this way, we can best meet our customer needs. We have over 20 years of experience in providing Emergency Access Systems to the marketplace.

“
**LEADERS
OF HIGH
SPECIFICATION
EMERGENCY
ACCESS
SYSTEMS &
FIRE DOORSETS
FOR OVER 25
YEARS**
”



PREMISES INFORMATION BOX (HSS PIB® C)



PIB®, the original SIB. The High Security Premises Information Box™ (HSS PIB® C) is the original secure information box (SIB), highly proven for over 15 years. Designed to provide fast access for the Fire & Rescue Service to building plans and information. For operational use, the HSS PIB® C was developed with firefighters to an exacting specification and is a recognised focal point in the event of an incident.

Designed for all types of buildings, including High Rise Residential Buildings and in line with the FIA (Fire Industry Association) & NFCC (The National Fire Chief's Council) Code of Practice as referenced in Approved Document B June 2022 amendments and Fire Safety (England) 2022 Regulation 4, following the recommendations of the Grenfell Inquiry, Phase I report.

Building Safety Update

Responsible Persons must ensure their contact details along with others permitted to access the building are contained in the secure information box. In April 2024 the Building Safety Regulator issued similar requirements for the Accountable Person. The information is mandated to be kept secure.



KEY FEATURES

- With latest NEW lock cylinder & key management technology to assist Responsible Persons and Principle Accountable Persons
- Exceeds EN1303:2015 requirements with 30 billion key combinations offering customers choice to further tailor the accessibility of their PIBs and other emergency access products for their buildings, with exceptionally high security
- Successfully tested to the exacting standard STS 205 for burglary resistance requirements of security cabinets, security enclosures and safe-deposit boxes. Achieving level BR2
- Third party certified, crucial to maintaining the integrity of the product: Certisecure CS5139
- Secured by Design approved. Secured by Design is the official police initiative to design out crime
- The HSS PIB C provides a recognised focal point for attending firefighters to access important premises plans and information in the form of the Emergency Response Pack
- Designed to be tailored to customers' needs for a range of building types, with bespoke locking systems and authorised signatory keys, whilst enabling Fire and Rescue Service access through their GSP One Key® System

- FIA / NFCC Code of Practice compliant
- Developed with firefighters for firefighters to the exacting specification which is now laid down in the FIA/NFCC Code of Practice
- Ergonomic design
- Safe design. SIBs are sited minimum 1.4 m from the ground; for this reason bevelled corners form part of the design to mitigate accidental injury
- Not reliant on power, persons or signal
- Offers weather protection and is designed to prevent corrosion
- For information on installation and maintenance packages: enquiries@gerdasecurity.co.uk



Robust design includes galvanised steel to prevent corrosion & internally positioned hinges to mitigate vandalism. Safe design to mitigate accidental injury with bevelled corners



Designed to mitigate intentional and unintentional misuse. PIBs have stood the test of time since their launch in 2004, and are designed for the lifetime of the building



High security locking system with patented cylinder achieving highest grades in EN 1303:2015 for attack resistance and durability. Now with NEW latest unique lock cylinder & key management technology



Instantly recognisable metal signage in-line with the FIA/ NFCC Code of Practice. Designed for longevity & fast identification for firefighters

The PIB® History

The history of the Premises Information Box (PIB) goes back as far as 2004, when Gerda Security and the fire engineering department of the London Fire Brigade worked together on an initiative to develop the concept of the 'Plans Box', which originated from the learning outcomes of the Kings Cross Fire. Owing to the unique key management technology integrated within our emergency access systems and their success in securing areas whilst enabling FRS access, the PIB has become a household name for the provision of premises plans and information.

Whilst recommended in the coroner's report for Lakanal House, the Premises Information Box became a mandated requirement following the recommendations out of the Phase 1 coroner's report into the Grenfell House tragedy.

All high rise residential buildings over 11m (Approved Document B, December 2022) and existing buildings over 18m (Fire Safety (England) regulations 2022) must have a premises information box or secure information box.

We are proud that our development of the Premises Information Box and our raising awareness over the years for the need for premises plans and information has been welcomed by the Fire and Rescue Services, with whom we have worked for 20 years.

We additionally developed the plans for firefighters to use in the event of an incident, which now form the basis of the Emergency Response Pack in the FIA / NFCC Code of Practice. Please refer to our ERP plans service.



EMERGENCY RESPONSE PACK SERVICE (ERP)

Gerda Security Products worked with the Fire and Rescue Service to produce a guidance manual for customers to assist with the production of plans and information in the optimum format for attending fire crews. This has gone on to form the basis of Emergency Response Pack guidance in the FIA/NFCC Code of Practice.

We are recognised by the Fire and Rescue Services in providing comprehensive best practice plans in the operational format required for firefighter use for 18 years.

Building Safety Update

Responsible Persons must ensure their contact details along with others permitted to access the building are contained in the secure information box. In April 2024 the Building Safety Regulator issued similar requirements for the Accountable Person. The information is mandated to be kept secure.

The PIB log book provides a section for this information.



KEY FEATURES

- Bespoke ERP Plans Service tailored to your housing stock, delivering clear and relevant information in the format readily accessible to the Fire and Rescue Service
- Full survey service by qualified experts
- PIB Log Book and Off the Run Sheet both supplied as part of the service
- Assists with Fire Safety (England) 2022 Regulation 6

- Review of housing stock needs
- Comprehensive inspection of properties & surrounding area
- Identification of passive and active safety features and fire control systems vital for FRS operational purposes
- Collation & production of laminated A3 plans as required by the Fire & Rescue Service. Includes orientation, on-arrival information, floor plans, vertical section detailing all floors and flat numbers, specific firefighting equipment
- Equipment, significant fire safety issues and evacuation strategy
- Digital records and A3 laminated hard copies
- Regular review and audit



Bespoke ERP Plans Service delivering clear and relevant information in the format readily accessible to firefighters



Digital customer plans and A3 laminated plans for operational use provided. Log books and off the run sheets also available



ERP Service offers: housing stock review; inspection of properties and surrounding areas and the option of regular reviews and audits



The Service includes; orientation plans, on arrival information, floor plans, vertical sections detailing all floors & flat numbers and firefighting equipment

Our Bespoke Service

Our bespoke service caters for Emergency Response Plans (ERP) through a comprehensive building survey conducted by skilled professionals.

The A3-format plans are specifically designed for fire and rescue service use, aligning with the requirements outlined in the Approved Document B June 2022 amendments and Fire Safety (England) 2022 Regulation 6.

As pioneers in this field, Gerda Security Products excels in delivering premises plans and information tailored to the operational needs of firefighters.

Our efficient and professional ERP Service adheres to the FIA / NFCC Code of Practice, ensuring compliance with industry standards.



“THE ERP IS THE CRITICAL COMPONENT OF THE PIB®/SIB SYSTEM FOR OPERATIONAL FIREFIGHTING AND RESCUE”.

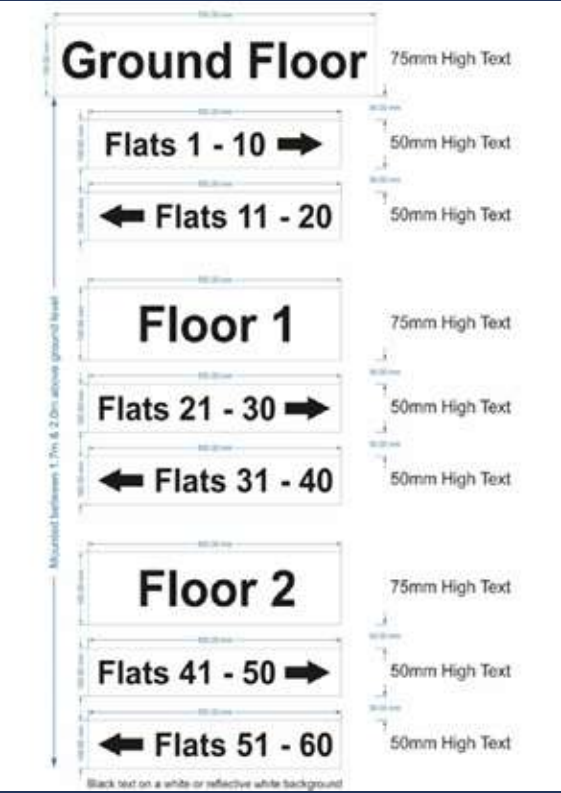
WAYFINDER SIGNAGE FOR THE FIRE & RESCUE SERVICE

The Fire Safety (England) Regulations 2022 makes it a legal requirement from 23 January 2023 for all high-rise residential buildings in England to install wayfinding signage in their buildings. This includes clear markings identifying floor and individual flat numbers.

It is, however, already a legal requirement for all new multi-occupied residential buildings above 11 metres (including those existing buildings undergoing relevant material alterations), to have signage installed.

SECTORS

- Residential - Social Housing
- Care home - Heritage Homes
- Commercial - Education
- Student Accommodation



KEY FEATURES

- Professional Signage in accordance with ADB specifications
- Comprehensive inspection of properties & surrounding area
- Designed for longevity
- Option to include as part of ERP (Emergency Response Pack) Plans provision
- Tailored to your building requirements
- **Assists with Fire Safety (England) 2022 Regulation 8 - Wayfinding Signage**

- Signage should conform to the specifications and location set out in Approved Document B
- Requiring signage to be installed by law in all existing high-rise buildings
- Responsible persons may wish to consider installing such signage in any other existing multi-occupied residential building
- Existing duties under the Fire Safety Order will make sure that this signage is maintained throughout the life of the building

PREMISES INFORMATION BOX (PIB®) STANDARD

The Standard Premises Information Box™ (PIB®), the original secure information box, is designed to provide fast access for the Fire and Rescue Service to building plans and information. The PIB® offers a good level of security proven in situ over the course of nearly 20 years. It is suitable for applications across a wide range of sectors, offering a good level of security for buildings including

health, education, transport and infrastructure, listed premises, places of assembly, offices and shops, factories warehouses, and heritage buildings. For internal siting or in a sheltered well-lit location positioned externally. For high rise residential buildings or where a higher degree of security is required, we recommend the High Security Premises Information Box™ (HSS PIB®C).

SECTORS

- Care home - Heritage Homes
- Commercial - Education



KEY FEATURES

- The Standard PIB® is designed to provide fast access to building plans and information for the Fire and Rescue Service
- Suitable for applications across a wide range of sectors, for internal siting or in a sheltered well-lit location positioned externally
- The lock cylinder, certified to EN1303:2015, achieves best grades in all categories and is approved by Secured by Design, which is a police preferred specification
- The unique shape of the Gerda multi-dimensional key® is trademarked

- The PIB® is designed and manufactured under the quality management system ISO 9001:2015
- Unique system where building providers have their own bespoke keys
- Immediate access for FRS through GSP One Key® system
- The Premises Information Box is constructed of aluminium profiles specified to PA38 in accordance with PN-84/H-93669
- Not reliant on power or persons
- Photoluminescent signage for instant recognition
- The Premises Information Box is a recognised focal point
- For information on installation and maintenance packages: enquiries@gerdasecurity.co.uk



The lock is designed so customers have their own bespoke keys whilst the Fire & Rescue Service gain access through their GSP One Key® System



Digital customer plans and A3 laminated plans for operational use provided. Log books and off the run sheets also available



Often internally sited, the standard PIB offers a photoluminescent sign for key location in areas of poor visibility



Offers a light weight design in aluminium. With photoluminescent signage instantly recognisable assisting in poor visibility areas

PIB or SIB?

What is the difference between a PIB or a SIB?

They're the same; a Premises Information Box (PIB®) is the original Gerda name for a secure facility to store information about a building for use by the fire service during an incident, which is now also known by the generic term secure information box (SIB).

'Premises Information Boxes' are referred to in the initial

Grenfell Tower Inquiry and in the FIA/NFCC Code of Practice (for the provision of Premises Information Boxes in Residential Buildings) with legislation simply referring to secure information boxes (now termed SIB). With a Gerda PIB you're installing the SIB originally developed with the fire and rescue service.

For high-rise residential buildings, including student accommodation, we recommend the HSS PIB® C.



FIREFIGHTER ACCESS SWITCH (GFS)[™]

The Firefighter Access Switch (GFS)[™] is designed to provide dedicated access to buildings for firefighters. It is designed to be fitted in place of an existing fire access control switch.

Traditionally firefighter access switches were introduced to enable the Fire and Rescue Service (FRS) to gain access through the use of a 'drop key'. However, over the years

the level of security has been compromised owing to the drop key becoming widely available and in particular to users who are not Fire and Rescue Service personnel. The Gerda Firefighter Access Switch (GFS) assists customers in regaining control of access to their buildings, whilst simultaneously giving back dedicated access to the Fire and Rescue Service.

SECTORS

- Residential - Social Housing
- Care home - Heritage Homes
- Commercial - Education
- Student Accommodation



KEY FEATURES

- The Firefighter Access Switch is designed to provide dedicated access to a building for firefighters
- Whilst simultaneously enabling building owners/managers to re-gain control of their building access and security
- With latest NEW lock cylinder & key management technology
- The patented lock cylinder within the GFS exceeds EN1303:2015 requirements with 30 billion key combinations offering customers choice to tailor the accessibility of their firefighter access switch and other emergency access products for their buildings, with exceptionally high security
- For dedicated firefighter access to buildings in the event of an emergency
- Designed with enhanced security to assist in improving access management
- For new and existing applications
- Can replace existing fire access control switches
- Flush mounted and surface mounted versions available
- The lock is designed to be operated by the GSP One Key[®] System used by the Fire and Rescue Service
- For information on installation and maintenance packages: enquiries@gerdasecurity.co.uk



The Firefighter Access Switch (GFS)[™] operates through the activation of the GSP One Key[®] System used by the FRS



Robust steel design with zinc coating. Tamper proof design with no visible fixings. Front access plate is not able to be removed without a key



Protective metal cover for the key hole to protect from debris



Can be retro-fitted in place of an existing fire access control switch

Dedicated FRS Access with Improved Security

The development of the Firefighter Access Switch was prompted by the vulnerability of traditional drop keys, which were commonly utilised for Fire and Rescue Services (FRS) access.

Unauthorised access brings with it a number of problems including potential disruption to residents. The Firefighter Access Switch can be fitted in place of a Fireman's Switch Plate.

It is uniquely designed to be operated solely by the GSP One Key[®] System used by the fire and rescue service within their jurisdiction.

Unlike drop keys, the keys for building providers are subject to a strict authorised key signatory system and separate to the GSP One Key[®] System used by the FRS.



ACCESS CONTROL BOX (ACB)[™]



The Access Control Box (ACB)[™] is for designated access to the Fire and Rescue Service only. It is designed to protect the control switch for access control for use by the Fire & Rescue Service, on new build residential buildings and buildings where there has been major refurbishment. The control switch is accessed by the Fire and Rescue Service through the GSP One Key[®] System. Once the switch is deactivated, access can be gained to the communal areas secured by electronic or electrical means.

It is the responsibility of the building owner / manager / designated ACB[™] contact to reinstate the power. Care must be taken to ensure that the door is not closed prior to re-activation. Once the power is reinstated the door which operates on a spring mechanism, can be closed to without the need of a key.

SECTORS

- Residential - Social Housing
- Care home - Heritage Homes
- Commercial - Education
- Student Accommodation



KEY FEATURES

- The ACB[™] is designed to protect the access control switch in new building developments in line with Secured by Design guidance
- Successfully tested to the exacting standard STS 205 for burglary resistance requirements of security cabinets, security enclosures and safe-deposit boxes. Achieving level BR2
- For Fire and Rescue Service accessibility, preventing unauthorised use
- Signage is photo-luminescent grade to PSPA class C for identification in smoke filled situations
- The locking system contains a spring mechanism so the door will open straight away – with or without a handle
- Operated through the GSP One Key[®] System for the FRS
- Secured by Design
- Patented integral cylinder now with NEW lock cylinder technology
- The door handle is attached to the right side of the door
- The ACB[™] is designed to counter condensation build up
- Designed to be positioned externally to a building as well as internal siting
- There are no keys supplied with the ACB[™], as per Secured by Design requirements
- For information on installation and maintenance packages: enquiries@gerdasecurity.co.uk



The hinges are positioned internally to mitigate vandalism



Instantly Recognisable Photo-luminescent Fire Service Emblem



Provides quick access to the Fire & Rescue Service through the GSP One Key[®] System



The door handle is designed to detach in the event of attack. The door still operates through its spring mechanism with the use of the key

Maintenance

The Access Control Box (ACB)[™] is for designated access for the Fire and Rescue Service only. It is designed to protect the control switch for FRS accessibility on new build residential buildings and buildings where there has been major refurbishment.

The ACB is designed to sit over the switch, as per SBD guidance "Homes 2024". Note 29.44 stipulates:

"Maintenance options to be provided by the manufacturer owing to more traditional drop key systems being easily obtained and leave the building vulnerable to crime and anti-social behaviour."

Gerda Security offer a number of service options for the Building Provider.



EACIE ENCLOSURE™

Evacuation Alert Control & Indicating Equipment Enclosure



The EACIE Enclosure™ has been designed and developed in accordance with British Standard BS8629:2019+A1:2023. It provides access to the Fire and Rescue Service through their GSP One Key® System. The EACIE Enclosure™ is Secured by Design approved.

The EACIE Enclosure™ forms part of an evacuation alert system, specifically used by the Fire and Rescue Service. It houses evacuation alert control and indicating equipment (EACIE), the function of which is to assist the Fire and Rescue Service in the management of a fire incident.

SECTORS

- Residential - Social Housing
- Student Accommodation



- The EACIE Enclosure™, designed and developed to BS 8629:2019+A1:2023, houses the EACIE evacuation system
- A proven system in high rise new build housing and a legal requirement
- Successfully tested to STS 205 for burglary resistance requirements of security cabinets, security enclosures and safe-deposit boxes. Achieving level BR2
- Third party certified: Certisecure CS5115
- Incorporates latest NEW lock cylinder & key management technology to assist Responsible Persons and Principle Accountable Persons
- Bespoke locking systems for customer buildings with registered key system, enabling Fire and Rescue Service access
- Assists with Approved Document B where the EACIE is a new recommendation for blocks of flats in buildings over 18m
- Uniform installation system process developed with EACIE manufacturers ensures straightforward first and second fixing

KEY FEATURES

- The EACIE Enclosure is designed and finished to meet the needs of the Fire and Rescue Service
- Highly secure, tested to STS205 BR2
- Third Party Certification: Certisecure CS 5115
- EACIE Enclosure™ is designed to mitigate against corrosion and weathering
- Fitted with the specialist EACIE™ signage
- The door handle is attached to the right side of the door and is positioned centrally
- The lock is designed to be operated by GSP One Key® System used by the FRS
- For information on installation and maintenance packages: enquiries@gerdasecurity.co.uk



We work in collaboration with leading manufacturers of EACIEs. Having designed the system with them in accordance with BS 8629, the EACIE Enclosure is developed to meet their product and installation needs. A list of our Approved Partners is available upon request



Instantly recognisable by the Fire & Rescue Service with signage in accordance to BS8629



The unique key system is designed so EACIE Enclosures and other restricted access systems may be opened by the Fire & Rescue Service (FRS) while building owners/accountable persons have their own secure access for each of their systems



Having undergone a series of test pilots and full launch, the EACIE Enclosure has received positive feedback in practice, as an essential piece of equipment in high rise residential buildings

Security

Protecting evacuation alert control and indicating equipment against unauthorised use is paramount given its critical role in ensuring safe and efficient building evacuations upon the Fire & Rescue Service's arrival.

Gerda Security were approached to design and develop a system to protect the EACIE and worked with leading alarm

manufacturers for a solution to suit all, including a uniform installation process developed to ensure straightforward first and second fixing.



THE H SYSTEM



KM 524077
KM 524079
KM 524081



The H System was designed and developed to address the issue of plant and service rooms being routinely breached and used for anti-social behaviour. Discarded drug syringes / damaged electrical equipment / damaged lift rooms, meant that it was hazardous for the Fire Service attending incidents and needing to access these areas.

understand the nature of the problem to provide a solution.

A robust, secure and reliable locking system was needed to enable asset management to maintain their service and plant rooms in a good condition, whilst permitting access to the Fire and Rescue Service in the event of an incident.

Gerda Security worked with large local authorities to

SECTORS

- Residential - Social Housing
- Care home - Heritage Homes
- Commercial - Education
- Student Accommodation



KEY FEATURES

- The H System® originated in the security of areas of restricted access, whilst enabling the Fire and Rescue Service entry
- Suited to a building's requirements, it offers high performance and versatility
- Twenty years on the H system has stood the test of time as a high performance high security locking system. Today's H System locks benefit from the latest NEW lock cylinder & key management technology to assist dutyholders in keeping buildings secure and safe
- Exceeding EN1303:2015 requirements with 30 billion effective key combinations (the standard's requirement is only minimum 100 000) it offers customers the choice to further tailor the accessibility of their areas of restricted access in buildings with exceptionally high security
- A kitemarked system, the locks are certified to BS3621 (key operation to both sides with deadlocking for rooftop security); BS8621 for areas of restricted access requiring means of escape
- A Secured by Design locking system

- A recognised focal point to assist operational response for firefighters
- Suitable for timber or steel doors for security applications OR with Gerda Security's range of Internal Service Room Doorsets which are Internal fire-rated doorset ranges FD60S / FD30S and External fire-rated Service Room Doorsets EI30 Sa / E60 EI30 Sa, UKCA marked
- Solid steel surface mounted rim lock with locking bars extended across lock body containing hardened steel rollers - antihacksaw & anti-drill. The high performance cylinder is integral to the lock and cannot be extracted, with excellent key control for areas of restricted access
- Assists with Health & Safety Risk Management
- Reduces damage to plant (accidental or wilful) through preventing unauthorised access
- For information on installation and maintenance packages: enquiries@gerdasecurity.co.uk



Suitable for timber or steel doors for security applications OR with Gerda Security fire-rated Service Room Doorsets: internal FD30S/60S and external EI30Sa/E60 EI30 Sa UKCA marked



Proven kitemarked and Secured by Design system achieving best categories in EN1303:2015 for attack resistance, durability and key related security. Now with NEW lock cylinder & key management technology



Highly secure with thumbturn operation to the inside, ensuring means of escape, BS8621 certified Kitemark KM52407



Steel escutcheon plate in red with hardened steel bolts together with anti-drill fixing. A recognised focal point to assist operational response for firefighters

The H System in practice

The H System provides restricted access to suit customer requirements for housing stock and buildings. Keys are available through our authorised key signatory process - via the registered keyholder.

Security range of Service Room Doorsets for both internal and external (UKCA compliant) applications.

This Secured by Design locking system, is able to be fitted to security doors, both steel and timber. For fire door applications, the H System is available in the Gerda



BARRIER GATE LOCK SYSTEM (BGL)®



The Barrier Gate Lock System forms part of the original suite of Emergency Access Systems to keep external areas of restricted access secure, whilst enabling 24/7 access to the Fire and Rescue Service.

A Secured by Design approved system, it assists with vehicular access management for estates and rural areas. It offers robust design for longevity and low maintenance.

SECTORS

- Residential - Social Housing
- Care home - Heritage Homes
- Commercial - Education
- Student Accommodation



KEY FEATURES

- The system provides effective key management through the issue of keys to individuals at different levels of authority or access
- An additional locating pin and retainer is supplied as part of the system to enable the gate to be held open until it is then closed and locked
- Stainless steel design, the Barrier Gate Lock is suitable for all types of weather
- The lock welds straightforwardly to steel gates
- For information on installation and maintenance packages: enquiries@gerdasecurity.co.uk
- Designed to solve the problem of gates being left inadvertently open. The Barrier Gate Lock Key is only able to be retrieved once the gate is closed
- High security, based on design of G2000® lock certified to EN1303: 2015 with 2 billion key combinations
- The Barrier Gate Lock® System is Secured by Design approved, the official UK police flagship initiative for designing out crime



Ideal for Local Authorities, Housing Associations and RSLs – affording improved access management for housing estates, parking areas & rural sites



Assists with Health & Safety Risk Management in reducing problems of fly-tipping and unauthorised access



Designed to prevent the key being removed when a gate is open – to avoid the problem of gates left unlocked



Proven system with strict key registration process; trademarked keys only available through Gerda Security Products

Vehicular Management for areas of restricted access

The Barrier Gate Lock system (BGL)® was designed and developed to address the issue of gates being inadvertently left unlocked and thereby open to misuse and fly-tipping. Gerda Security worked with large local authorities to understand the nature of the problem to provide a solution.

The problem was essentially leaving gates open. The Barrier Gate Lock system is designed to only retrieve the key once the gate is closed.

This Secured by Design locking system is able to be fitted to swing gates. The system comprises the lock itself; connectors for gate posts and keys suited specifically to the locking section for the organisation and its users.

Ideal for enclosed areas requiring vehicular access management.



EMERGENCY ACCESS SYSTEMS

With latest NEW unique lock cylinder and key technology.

The high specification cylinder in the design of the Emergency Access Systems not only achieves the attack resistance standards within EN 1303:2015, it offers a vast range of key combinations.

EN 1303:2015 stipulates the number of effective differs at only minimum 100 000 key differs for the highest grade (6). The NEW unique key management technology of the patented cylinder design means it offers 30 billion key differs.

This is important as it means that customers can tailor their buildings' requirements to a wide range of options, knowing that they have complete security.

These high security cylinders are not reliant on any form of power or battery and keys are attack resistance tested under EN 1303:2015 achieving best grades in all tests.

Not only legally protected through patent, there is no equipment to copy the lock cylinder keys through locksmiths or otherwise, making copying the key physically impossible other than through our authorised channel.

The key design carries a 3d trademark and all keys are part of a secure registered key system with authorised key signatories.

The Key for the Fire and Rescue Service is designed with important features to assist with operational response:

- One Key System for all emergency access products in a Fire & Rescue Service's jurisdiction: HSS PIB C, Standard PIBs, EACIE Evacuation & Alert Systems, Locks for areas of restricted access with FRS access (H System), Access Control Protection Boxes (ACBs), and Firefighter Access Switches.

So only the One Key is carried, not several.

- The FRS Key is not the same as customer keys for Emergency Access Products – in either design or function.
- The FRS Key cannot be copied and forms part of a patented system.
- The FRS Key is carried by 98% of the Fire & Rescue Services for their jurisdiction. For organisations with buildings across the UK, their emergency access systems are tailored to suit their needs.



Fire and Rescue Service - GSP One Key® system

GSP One Key® system allows each Fire and Rescue Service access to all Gerda Emergency Access Systems in their jurisdiction.

Emergency Access Systems



The EACIE Enclosure™ (EACIE)



Access Control Box™ (ACB)



Premises Information Box (PIB)®



Secure Premises Information Box (HSS PIB® C)



Firefighter Access Switch (GFS)™



H System® lock



The Barrier Gate Lock® (BGL)

End user

Emergency Access Systems can be **suited individually** to meet bespoke building / organisational needs

Contractor

Contractor Keys can be issued for **specific EAS products** and not for others

Resident Keys

Resident Keys can be **issued for the BGL** that do not grant access to another EAS products

The EACIE Enclosure™ (EACIE)

The EACIE Enclosure™ is an integral component of an evacuation alert system



Access Control Box™ (ACB)

The ACB is designed to protect and house access control switches



Secure Premises Information Box (HSS PIB® C)

The Premises Information Box system is designed to provide fast access for the Fire & Rescue Service to building plans and information



Premises Information Box™ Standard (PIB®)

The Premises Information Box system is designed to provide fast access for the Fire & Rescue Service to building plans and information



Firefighter Access Switch (GFS)™

Firefighter Access Switch (GFS)™ is designed to replace the ageing drop key system allowing the Fire and Rescue service access into buildings



H System® lock

The H System locks provide controlled access to restricted areas, including service rooms, whilst enabling Fire & Rescue Service access



The Barrier Gate Lock® (BGL)

The Barrier Gate Locks provide controlled access to restricted vehicular areas, whilst enabling Fire & Rescue Service access

THE GSP ONE KEY® SYSTEM FOR THE FIRE & RESCUE SERVICES

GSP Emergency Access Systems are designed to offer access to building owners/managers their own **tailored locking system** using their key/s; whilst the Fire and Rescue Service gain entry through the **GSP One Key® System** for their jurisdiction.

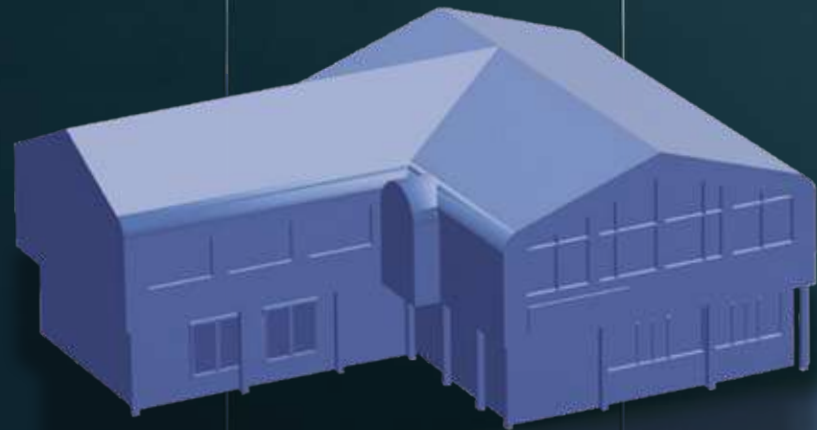
In the early phases of an emergency, **time is of the essence** operationally, so effective access is crucial.

The GSP One Key® System, designed to assist effective access, means the Fire and Rescue Service **access all Emergency Access Systems with the One Key; not needing to carry several keys** – vital in terms of key recognition and response for the Fire and Rescue Service.

OFFICE LOCATIONS

Manchester

The Towers
Manchester



Technologies House,
Mildenhall,
Suffolk



Suffolk

MANUFACTURING & ASSEMBLY FACILITIES

Barnham
Suffolk

15,000 sq ft

**Centre of
Training &
Innovation**

"This is an excellent innovation and something sadly lacking throughout the industry. Training by experienced and qualified individuals is, of course, essential."

Mildenhall
Suffolk

80,000 sq ft